

## Product datasheet for **AM31226AF-N**

### CD45 (PTPRC) (CD45RA) Mouse Monoclonal Antibody [Clone ID: B-C15]

#### Product data:

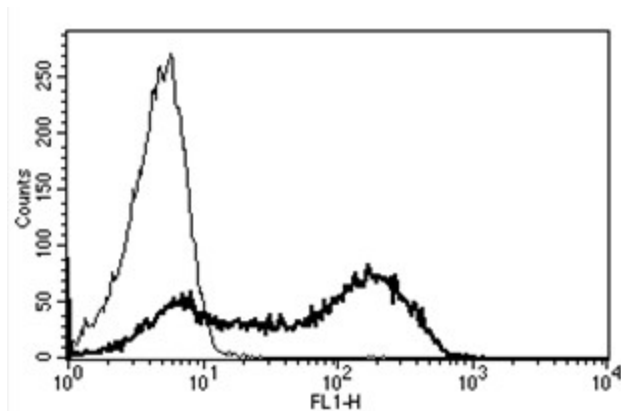
Product Type:	Primary Antibodies
Clone Name:	B-C15
Applications:	FC, IHC
Recommended Dilution:	Flow Cytometry. Immunohistochemistry on paraffin sections.
Reactivity:	Human
Host:	Mouse
Isotype:	IgG1
Clonality:	Monoclonal
Immunogen:	Reh 6 cell line
Specificity:	This antibody recognises the restricted Leucocyte Common Antigen (LCA) with different isoforms of 205/220 kDa.
Formulation:	Phosphate-buffered saline. Sterile-filtered through 0.22 µm. Carrier and preservative free State: Azide Free State: Liquid purified Ig fraction
Concentration:	lot specific
Purification:	Ion exchange chromatography
Conjugation:	Unconjugated
Storage:	Store the antibody undiluted at 2-8°C.
Stability:	Shelf life: one year from despatch.
Gene Name:	protein tyrosine phosphatase, receptor type C
Database Link:	<a href="#">Entrez Gene 5788 Human P08575</a>
Synonyms:	PTPRC, Leukocyte common antigen, L-CA, T200
Protein Families:	Druggable Genome, ES Cell Differentiation/IPS, Phosphatase, Transmembrane



[View online »](#)

**Protein Pathways:** Cell adhesion molecules (CAMs), Fc gamma R-mediated phagocytosis, Primary immunodeficiency, T cell receptor signaling pathway

**Product images:**



A typical staining pattern with the B-C15 monoclonal antibody of lymphocytes