

Product datasheet for **AM31223RP-N**

CD40 Mouse Monoclonal Antibody [Clone ID: B-B20]

Product data:

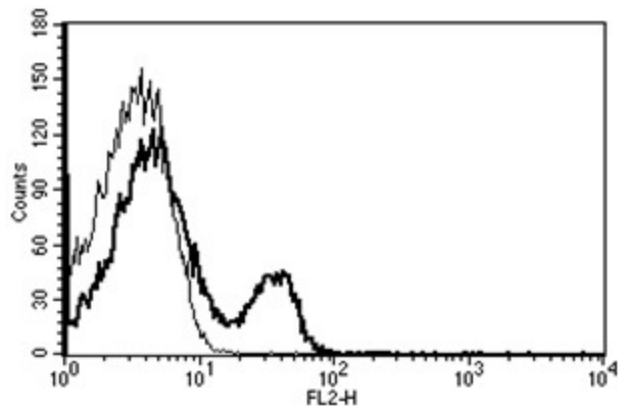
Product Type:	Primary Antibodies
Clone Name:	B-B20
Applications:	FC
Recommended Dilution:	Flow Cytometry: Use 10 µl to label 10 ⁶ cells or 100 µl of whole blood.
Reactivity:	Human
Host:	Mouse
Isotype:	IgG1
Clonality:	Monoclonal
Immunogen:	Raji cell line
Specificity:	This antibody recognises the Bp50 antigen, a 48 kDa protein.
Formulation:	Phosphate-buffered saline containing 1 % BSA as stabilizer and 0.09 % sodium azide as preservative Label: PE State: Lyophilized purified IgG fraction Label: R - Phycoerythrin
Reconstitution Method:	Restore with 1.0 ml deionised water.
Purification:	Ion exchange chromatography
Conjugation:	PE
Storage:	Store the antibody undiluted at 2-8°C. DO NOT FREEZE!
Stability:	Shelf life: 6 month from despatch.
Gene Name:	CD40 molecule
Database Link:	Entrez Gene 958 Human P25942
Synonyms:	TNFRSF5, CDw40, Bp50
Protein Families:	Druggable Genome, Secreted Protein, Transmembrane



[View online »](#)

Protein Pathways: Allograft rejection, Asthma, Autoimmune thyroid disease, Cell adhesion molecules (CAMs), Cytokine-cytokine receptor interaction, Primary immunodeficiency, Systemic lupus erythematosus, Toll-like receptor signaling pathway, Viral myocarditis

Product images:



A typical staining pattern with the B-B20 monoclonal antibody of lymphocytes