

Product datasheet for **AM31223AF-N**

CD40 Mouse Monoclonal Antibody [Clone ID: B-B20]

Product data:

Product Type:	Primary Antibodies
Clone Name:	B-B20
Applications:	FC, FN, IHC
Recommended Dilution:	Flow cytometry. Functional Assay: Stimulates B-cell proliferation together with IL-4. Immunochemistry on Frozen Sections.
Reactivity:	Human
Host:	Mouse
Isotype:	IgG1
Clonality:	Monoclonal
Immunogen:	Raji cell line.
Specificity:	This antibody recognises the Bp50 antigen, a 48 kDa protein.
Formulation:	Phosphate-buffered saline. Sterile-filtered through 0.22 µm. Carrier and preservative free. State: Azide Free State: Liquid purified IgG fraction
Concentration:	lot specific
Purification:	Ion Exchange Chromatography
Conjugation:	Unconjugated
Storage:	Store the antibody undiluted at 2-8°C.
Stability:	Shelf life: one year from despatch.
Gene Name:	CD40 molecule
Database Link:	Entrez Gene 958 Human P25942



[View online »](#)

Background:

CD40 is a costimulatory molecule of the TNF receptor superfamily and is expressed on many cell types, such as B cells, monocytes/macrophages, dendritic cells, endothelial cells, fibroblasts or vascular smooth muscle cells. Interaction of CD40 and its ligand CD154 (CD40L) is required for the generation of antibody responses to T-dependent antigens as well as for the development of germinal centers and memory B cells. In monocytes/macrophages CD40 engagement induces production of pro-inflammatory cytokines and chemokines. CD40-CD154 interactions are also critical for development of CD4 T cell-dependent effector functions. CD40 links innate and adaptive immune responses to bacterial stimuli and serves as an important regulator affecting functions of other costimulatory molecules.

Synonyms:

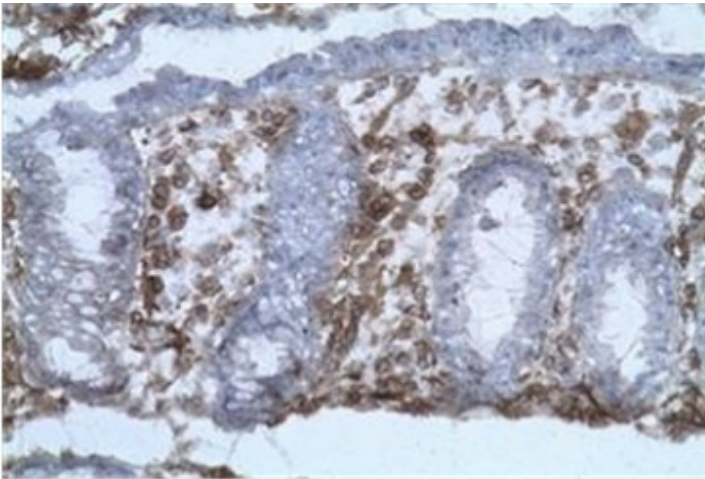
TNFRSF5, CDw40, Bp50

Protein Families:

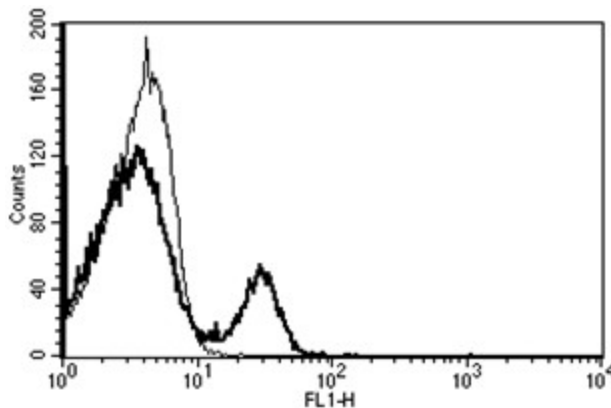
Druggable Genome, Secreted Protein, Transmembrane

Protein Pathways:

Allograft rejection, Asthma, Autoimmune thyroid disease, Cell adhesion molecules (CAMs), Cytokine-cytokine receptor interaction, Primary immunodeficiency, Systemic lupus erythematosus, Toll-like receptor signaling pathway, Viral myocarditis

Product images:


Labelling on Frozen Section (Acetone Fixed) of Human colic mucosa with B-B20 diluted at 1/100 (background coloration by hematoxylin).



A typical staining pattern with the B-B20 monoclonal antibody of lymphocytes