

Product datasheet for **AM31222RP-N**

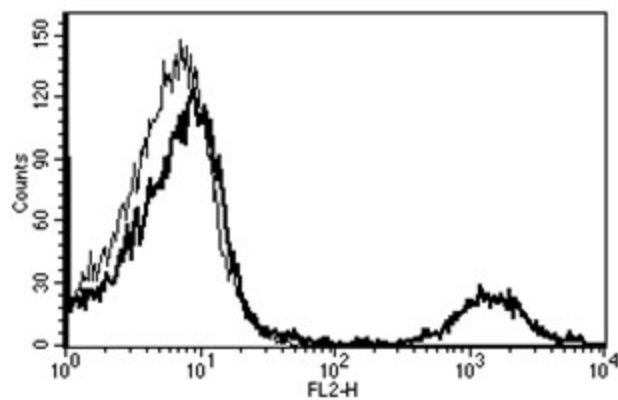
CD20 (MS4A1) Mouse Monoclonal Antibody [Clone ID: B-H20]

Product data:

Product Type:	Primary Antibodies
Clone Name:	B-H20
Applications:	FC
Recommended Dilution:	Flow Cytometry: Use 10 µl to label 10 ⁶ cells or 100 µl of whole blood.
Reactivity:	Human
Host:	Mouse
Isotype:	IgG2a
Clonality:	Monoclonal
Immunogen:	Chronic Lymphoid Leukaemia cells (CLL)
Specificity:	This antibody recognises the B1, Bp35 antigen, a 33-37 kDa protein.
Formulation:	PBS containing 5% BSA as stabilizer and 0.09% sodium azide as preservative Label: PE State: Lyophilized purified IgG fraction Label: R - Phycoerythrin
Reconstitution Method:	Restore with 1.0 ml deionised water.
Purification:	Ion exchange chromatography
Conjugation:	PE
Storage:	Store the antibody undiluted at 2-8°C. DO NOT FREEZE!
Stability:	Shelf life: 6 month from despatch.
Gene Name:	membrane spanning 4-domains A1
Database Link:	Entrez Gene 931 Human P11836
Synonyms:	MS4A1, Leu-16, Bp35, B-cell marker
Protein Families:	Druggable Genome, Transmembrane
Protein Pathways:	Hematopoietic cell lineage



[View online »](#)

Product images:

A typical staining pattern with the B-H20 monoclonal antibody of lymphocytes