

## Product datasheet for **AM31222AF-N**

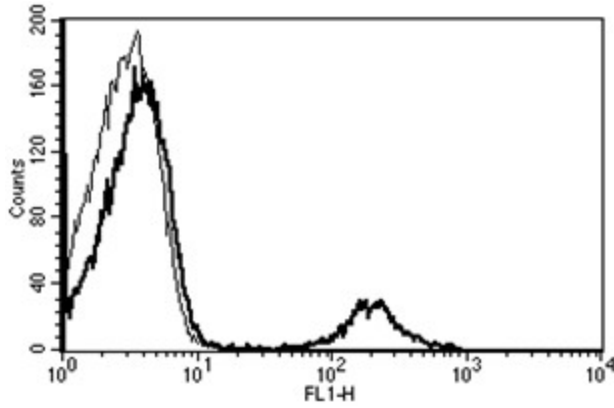
### CD20 (MS4A1) Mouse Monoclonal Antibody [Clone ID: B-H20]

#### Product data:

Product Type:	Primary Antibodies
Clone Name:	B-H20
Applications:	FC, FN
Recommended Dilution:	<b>Flow Cytometry.</b>
	<b>Functional Assay:</b> Cytotoxic in association with the complement on CD20+ cells.
Reactivity:	Human
Host:	Mouse
Isotype:	IgG2a
Clonality:	Monoclonal
Immunogen:	Chronic Lymphoid Leukaemia cells (CLL).
Specificity:	This antibody recognises the B1, Bp35 antigen, a 33-37 kDa protein.
Formulation:	Phosphate-buffered saline. Sterile-filtered through 0.22 µm. Carrier and preservative free. State: Azide Free State: Liquid purified Ig fraction
Concentration:	lot specific
Purification:	Ion Exchange Chromatography
Conjugation:	Unconjugated
Storage:	Store the antibody undiluted at 2-8°C.
Stability:	Shelf life: one year from despatch.
Gene Name:	membrane spanning 4-domains A1
Database Link:	<a href="#">Entrez Gene 931 Human P11836</a>
Synonyms:	MS4A1, Leu-16, Bp35, B-cell marker
Protein Families:	Druggable Genome, Transmembrane
Protein Pathways:	Hematopoietic cell lineage



[View online »](#)

**Product images:**

A typical staining pattern with the B-H20 monoclonal antibody of lymphocytes