

Product datasheet for **AM31221FC-N**

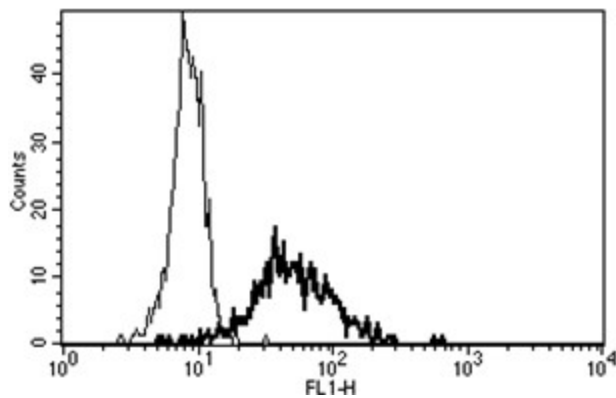
CD13 (ANPEP) Mouse Monoclonal Antibody [Clone ID: B-F10]

Product data:

Product Type:	Primary Antibodies
Clone Name:	B-F10
Applications:	FC
Recommended Dilution:	Flow Cytometry: Use 10 µl to label 10 ⁶ cells or 100 µl of whole blood.
Reactivity:	Human
Host:	Mouse
Isotype:	IgG1
Clonality:	Monoclonal
Immunogen:	KG-1
Specificity:	This antibody recognises the aminopeptidase N, a 150-170 kDa protein.
Formulation:	Phosphate-buffered saline containing 1 % BSA as stabilizer and 0.09 % sodium azide as preservative Label: FITC State: Liquid purified IgG fraction Label: Fluoresceinisothiocyanat
Purification:	Ion exchange chromatography
Conjugation:	FITC
Storage:	Store the antibody undiluted at 2-8°C.
Stability:	Shelf life: one year from despatch.
Gene Name:	alanyl aminopeptidase, membrane
Database Link:	Entrez Gene 290 Human P15144
Synonyms:	Aminopeptidase N, ANPEP, APN, PEPN
Protein Families:	Druggable Genome, ES Cell Differentiation/IPS, Protease, Transmembrane
Protein Pathways:	Glutathione metabolism, Hematopoietic cell lineage, Metabolic pathways, Renin-angiotensin system



[View online »](#)

Product images:

A typical staining pattern with the B-F10 monoclonal antibody of monocytes