

Product datasheet for **AM31220RP-N**

CD10 (MME) Mouse Monoclonal Antibody [Clone ID: B-E3]

Product data:

Product Type:	Primary Antibodies
Clone Name:	B-E3
Applications:	FC
Recommended Dilution:	Flow Cytometry: Use 10 µl to label 10 ⁶ cells or 100 µl of whole blood.
Reactivity:	Human
Host:	Mouse
Isotype:	IgG2a
Clonality:	Monoclonal
Immunogen:	Daudi and Raji cell lines
Specificity:	This antibody recognises the Common Acute Lymphoblastic Leukemia Antigen (CALLA), a 100 kDa protein.
Formulation:	Phosphate-buffered saline containing 1% BSA as stabilizer and 0.09% sodium azide as preservative Label: PE State: Lyophilized purified IgG fraction Label: R - Phycoerythrin
Reconstitution Method:	Restore with 1.0 ml deionised water.
Purification:	Ion exchange chromatography
Conjugation:	PE
Storage:	Store the antibody undiluted at 2-8°C. DO NOT FREEZE!
Stability:	Shelf life: 6 month from despatch.
Gene Name:	membrane metallo-endopeptidase
Database Link:	Entrez Gene 4311 Human P08473
Synonyms:	MME, EPN, Neutral endopeptidase 24.11, Neutral endopeptidase, NEP, Enkephalinase, Atriopeptidase, CALLA

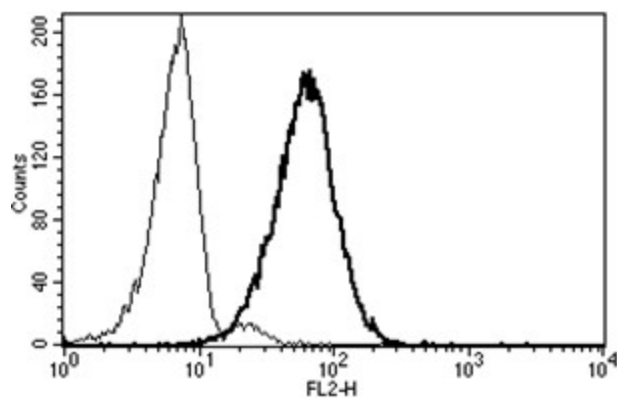


[View online »](#)

Protein Families: Druggable Genome, Protease, Transmembrane

Protein Pathways: Alzheimer's disease, Hematopoietic cell lineage, Renin-angiotensin system

Product images:



A typical staining pattern with the B-E3 monoclonal antibody of granulocytes