

Product datasheet for **AM31220PU-N**

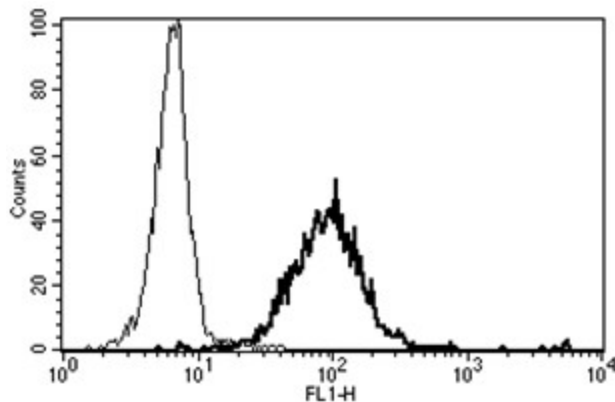
CD10 (MME) Mouse Monoclonal Antibody [Clone ID: B-E3]

Product data:

Product Type:	Primary Antibodies
Clone Name:	B-E3
Applications:	FC, IHC
Recommended Dilution:	Immunohistochemistry on paraffin sections. Flow Cytometry: Use 10 µl to label 10e6 cells or 100 µl of whole blood.
Reactivity:	Human
Host:	Mouse
Isotype:	IgG2a
Clonality:	Monoclonal
Immunogen:	Daudi and Raji cell lines
Specificity:	This antibody recognises the Common Acute Lymphoblastic Leukemia Antigen (CALLA), a 100 kDa protein.
Formulation:	Phosphate-buffered saline containing 1 % BSA as stabilizer and 0.09 % sodium azide as preservative State: Purified State: Liquid purified Ig fraction
Purification:	Ion exchange chromatography
Conjugation:	Unconjugated
Storage:	Store the antibody undiluted at 2-8°C.
Stability:	Shelf life: one year from despatch.
Gene Name:	membrane metallo-endopeptidase
Database Link:	Entrez Gene 4311 Human P08473
Synonyms:	MME, EPN, Neutral endopeptidase 24.11, Neutral endopeptidase, NEP, Enkephalinase, Atriopeptidase, CALLA
Protein Families:	Druggable Genome, Protease, Transmembrane
Protein Pathways:	Alzheimer's disease, Hematopoietic cell lineage, Renin-angiotensin system



[View online »](#)

Product images:

A typical staining pattern with the B-E3 monoclonal antibody of granulocytes