

Product datasheet for **AM31220AF-N**

CD10 (MME) Mouse Monoclonal Antibody [Clone ID: B-E3]

Product data:

Product Type:	Primary Antibodies
Clone Name:	B-E3
Applications:	FC, FN, IHC
Recommended Dilution:	Immunohistochemistry: 1/50. Flow Cytometry. Functional Assay: Does not inhibit the Mixed Lymphocyte Culture Cytotoxic in association with the Rabbit Complement on CD10+ Cells.
Reactivity:	Human
Host:	Mouse
Isotype:	IgG2a
Clonality:	Monoclonal
Immunogen:	Daudi and Raji cell lines.
Specificity:	This antibody recognises the Common Acute Lymphoblastic Leukemia Antigen (CALLA), a 100 kDa protein.
Formulation:	Phosphate-buffered saline. Sterile-filtered through 0.22 µm and treated to remove endotoxins. Carrier and preservative free. State: Azide Free State: Liquid purified IgG fraction
Concentration:	lot specific
Purification:	Ion Exchange Chromatography
Conjugation:	Unconjugated
Storage:	Store the antibody undiluted at 2-8°C.
Stability:	Shelf life: one year from despatch.
Gene Name:	membrane metallo-endopeptidase
Database Link:	Entrez Gene 4311 Human P08473



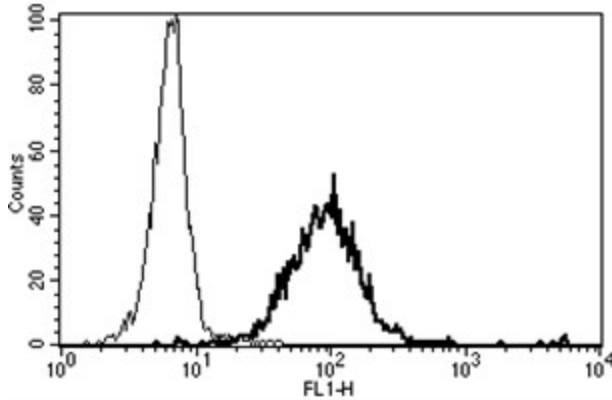
[View online »](#)

Synonyms: MME, EPN, Neutral endopeptidase 24.11, Neutral endopeptidase, NEP, Enkephalinase, Atriopeptidase, CALLA

Protein Families: Druggable Genome, Protease, Transmembrane

Protein Pathways: Alzheimer's disease, Hematopoietic cell lineage, Renin-angiotensin system

Product images:



A typical staining pattern with the B-E3 monoclonal antibody of granulocytes