

## Product datasheet for **AM31218AF-N**

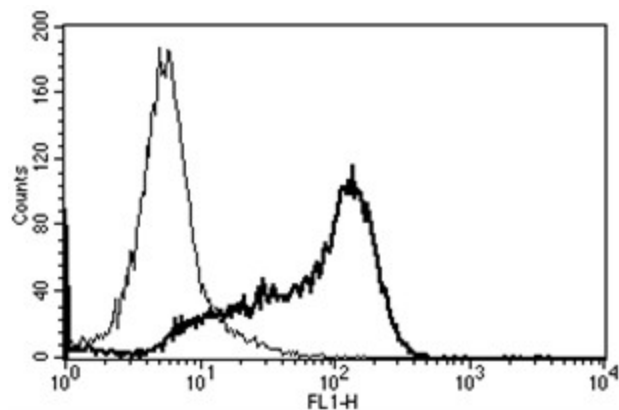
### CD6 Mouse Monoclonal Antibody [Clone ID: B-F3]

#### Product data:

|                       |   |
|-----------------------|---|
| Product Type:         | Primary Antibodies  |
| Clone Name:           | B-F3  |
| Applications:         | FC  |
| Recommended Dilution: | Flow Cytometry.   |
| Reactivity:           | Human   |
| Host:                 | Mouse   |
| Isotype:              | IgG1  |
| Clonality:            | Monoclonal  |
| Immunogen:            | Chronic Lymphoid Leukemia cells (CLL)   |
| Specificity:          | This antibody recognises a 100-130 kDa protein.   |
| Formulation:          | Phosphate-buffered saline.<br>Sterile-filtered through 0.22 µm.<br>Carrier and preservative free<br>State: Azide Free<br>State: Liquid purified Ig fraction |
| Concentration:        | lot specific  |
| Purification:         | Ion exchange chromatography   |
| Conjugation:          | Unconjugated  |
| Storage:              | Store the antibody undiluted at 2-8°C.  |
| Stability:            | Shelf life: one year from despatch.   |
| Gene Name:            | CD6 molecule  |
| Database Link:        | <a href="#">Entrez Gene 923 Human P30203</a>  |
| Synonyms:             | T12, TP120  |
| Protein Families:     | Druggable Genome, Transmembrane   |
| Protein Pathways:     | Cell adhesion molecules (CAMs)  |



[View online »](#)

**Product images:**

A typical staining pattern with the B-F3 monoclonal antibody of lymphocytes