

## Product datasheet for **AM31216AF-N**

### CD4 Mouse Monoclonal Antibody [Clone ID: B-A1]

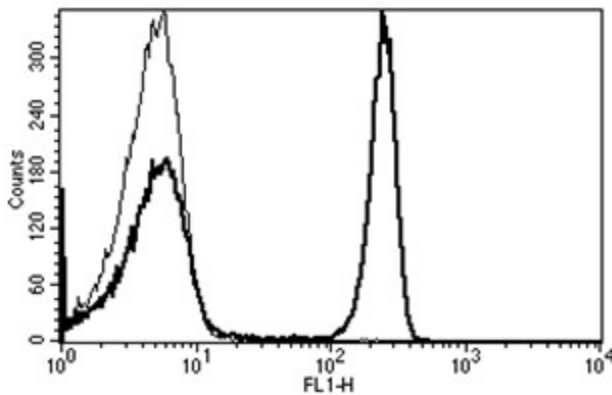
#### Product data:

Product Type:	Primary Antibodies
Clone Name:	B-A1
Applications:	FC, FN, IHC
Recommended Dilution:	<b>Flow Cytometry.</b> <b>Immunohistochemistry:</b> 1/50. <b>Functional Assay:</b> Inhibits Mixed Lymphocyte Culture.
Reactivity:	Human
Host:	Mouse
Isotype:	IgG2a
Clonality:	Monoclonal
Immunogen:	Human thymocytes and jurkat cell lines. <b>Hybridoma:</b> Myeloma X63/AG.8653 x Balb/c spleen cells.
Specificity:	This antibody recognizes a 55 kDa protein.
Formulation:	Phosphate-buffered saline. Sterile-filtered through 0.22 µm and treated to remove endotoxins. Carrier and preservative free State: Azide Free State: Liquid purified Ig fraction
Concentration:	lot specific
Purification:	Ion Exchange Chromatography
Conjugation:	Unconjugated
Storage:	Store the antibody undiluted at 2-8°C.
Stability:	Shelf life: one year from despatch.
Gene Name:	CD4 molecule
Database Link:	<a href="#">Entrez Gene 920 Human</a> <a href="#">P01730</a>



[View online »](#)

<b>Background:</b>	CD4, a single chain transmembrane glycoprotein, is found on a T cell subset (helper/inducer) representing 45 % of peripheral blood lymphocytes. It is also present on 80 % of thymocytes and at a lower level on monocytes. It is involved in recognition of antigen presented along with MHC class II by APCs. It serves as receptor for HIV.
<b>Synonyms:</b>	T-cell surface antigen T4/Leu-3
<b>Note:</b>	<b>Kd:</b> 0.142 nM
<b>Protein Families:</b>	Adult stem cells, Druggable Genome, ES Cell Differentiation/IPS, Induced pluripotent stem cells, Transmembrane
<b>Protein Pathways:</b>	Antigen processing and presentation, Cell adhesion molecules (CAMs), Hematopoietic cell lineage, Primary immunodeficiency, T cell receptor signaling pathway

**Product images:**

A typical staining pattern with the B-A1 monoclonal antibody of lymphocytes