

## Product datasheet for **AM31215RP-N**

### CD3E Mouse Monoclonal Antibody [Clone ID: B-B11]

#### Product data:

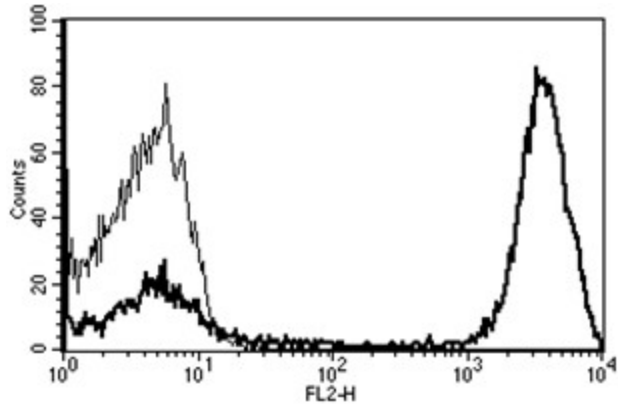
Product Type:	Primary Antibodies
Clone Name:	B-B11
Applications:	FC
Recommended Dilution:	<b>Flow Cytometry:</b> Use 10 µl to label 10 <sup>6</sup> cells or 100 µl of whole blood.
Reactivity:	Human
Host:	Mouse
Isotype:	IgG1
Clonality:	Monoclonal
Immunogen:	PHA activated T cells
Specificity:	This antibody recognises a 20-32 kDa protein.
Formulation:	Phosphate-buffered saline Label: PE State: Lyophilized purified IgG fraction Stabilizer: 5% BSA Preservative: 0.09% Sodium Azide Label: R-Phycoerythrin
Reconstitution Method:	Restore with 1.0 ml deionised water.
Purification:	Ion Exchange Chromatography
Conjugation:	PE
Storage:	Store the antibody undiluted at 2-8°C. <b>DO NOT FREEZE!</b>
Stability:	Shelf life: 6 month from despatch.
Gene Name:	CD3e molecule
Database Link:	<a href="#">Entrez Gene 916 Human P07766</a>
Synonyms:	T3/Leu-4
Protein Families:	Druggable Genome, Transmembrane



[View online »](#)

Protein Pathways: Hematopoietic cell lineage, Primary immunodeficiency, T cell receptor signaling pathway

### Product images:



A typical staining pattern with the B-B11 monoclonal antibody of lymphocytes