

Product datasheet for **AM31215FC-N**

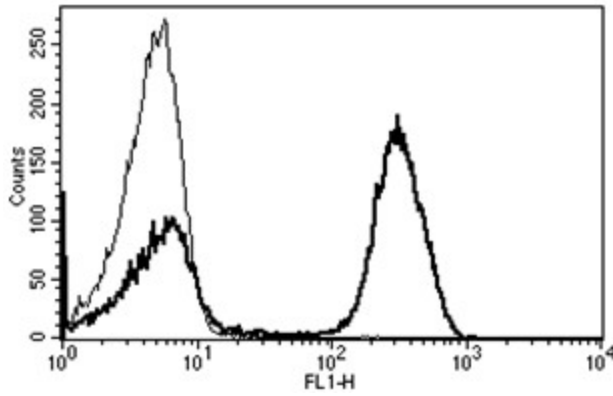
CD3E Mouse Monoclonal Antibody [Clone ID: B-B11]

Product data:

Product Type:	Primary Antibodies
Clone Name:	B-B11
Applications:	FC
Recommended Dilution:	Flow Cytometry: Use 10 µl to label 10 ⁶ cells or 100 µl of whole blood.
Reactivity:	Human
Host:	Mouse
Isotype:	IgG1
Clonality:	Monoclonal
Immunogen:	PHA activated T cells
Specificity:	This antibody recognises a 20-32 kDa protein.
Formulation:	Phosphate-buffered saline containing 5 % BSA as stabilizer and 0.09 % sodium azide as preservative Label: FITC State: Liquid purified IgG fraction
Purification:	Ion exchange chromatography
Conjugation:	FITC
Storage:	Store the antibody undiluted at 2-8°C.
Stability:	Shelf life: one year from despatch.
Gene Name:	CD3e molecule
Database Link:	Entrez Gene 916 Human P07766
Synonyms:	T3/Leu-4
Protein Families:	Druggable Genome, Transmembrane
Protein Pathways:	Hematopoietic cell lineage, Primary immunodeficiency, T cell receptor signaling pathway



[View online »](#)

Product images:

A typical staining pattern with the B-B11 monoclonal antibody of lymphocytes