

## Product datasheet for **AM31215BT-N**

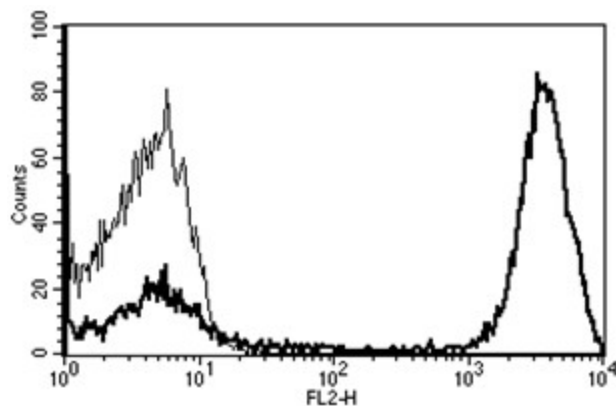
### CD3E Mouse Monoclonal Antibody [Clone ID: B-B11]

#### Product data:

Product Type:	Primary Antibodies
Clone Name:	B-B11
Applications:	FC
Recommended Dilution:	<b>Flow Cytometry:</b> Use 10 µl to label 10 <sup>6</sup> cells or 100 µl of whole blood.
Reactivity:	Human
Host:	Mouse
Isotype:	IgG1
Clonality:	Monoclonal
Immunogen:	PHA activated T cells
Specificity:	This antibody recognises a 20-32 kDa protein.
Formulation:	PBS containing 1% BSA as stabilizer and 0.09% Sodium Azide as preservative Label: Biotin State: Lyophilized purified IgG fraction
Reconstitution Method:	Restore with 1.0 ml deionised water.
Purification:	Ion exchange chromatography
Conjugation:	Biotin
Storage:	Store the antibody undiluted at 2-8°C.
Stability:	Shelf life: 6 month from despatch.
Gene Name:	CD3e molecule
Database Link:	<a href="#">Entrez Gene 916 Human P07766</a>
Synonyms:	T3/Leu-4
Protein Families:	Druggable Genome, Transmembrane
Protein Pathways:	Hematopoietic cell lineage, Primary immunodeficiency, T cell receptor signaling pathway



[View online »](#)

**Product images:**

A typical staining pattern with the B-B11 monoclonal antibody of lymphocytes