

## Product datasheet for **AM31215AF-N**

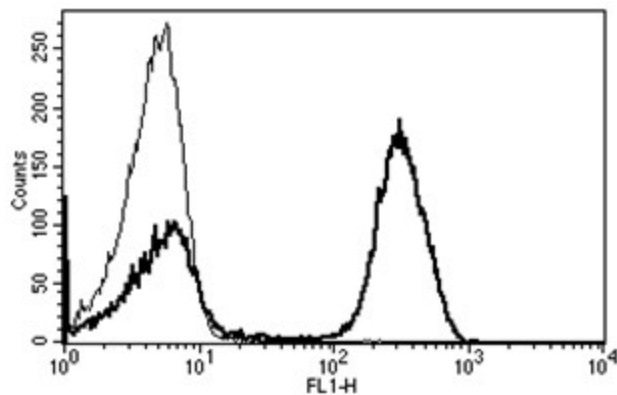
### CD3E Mouse Monoclonal Antibody [Clone ID: B-B11]

#### Product data:

Product Type:	Primary Antibodies
Clone Name:	B-B11
Applications:	FC, FN
Recommended Dilution:	<b>Flow Cytometry.</b>
	<b>Functional Assay:</b> Induces T lymphocyte stimulation and proliferation.
Reactivity:	Human
Host:	Mouse
Isotype:	IgG1
Clonality:	Monoclonal
Immunogen:	PHA activated T cells.
Specificity:	This antibody recognises a 20-32 kDa protein.
Formulation:	Phosphate-buffered saline. Sterile-filtered through 0.22 µm. Carrier and preservative free State: Azide Free State: Liquid purified IgG fraction
Concentration:	lot specific
Purification:	Ion Exchange Chromatography
Conjugation:	Unconjugated
Storage:	Store the antibody undiluted at 2-8°C.
Stability:	Shelf life: one year from despatch.
Gene Name:	Homo sapiens CD3e molecule (CD3E)
Database Link:	<a href="#">Entrez Gene 916 Human P07766</a>
Synonyms:	T3/Leu-4
Protein Families:	Druggable Genome, Transmembrane
Protein Pathways:	Hematopoietic cell lineage, Primary immunodeficiency, T cell receptor signaling pathway



[View online »](#)

**Product images:**

A typical staining pattern with the B-B11 monoclonal antibody of lymphocytes