

Product datasheet for **AM31213AF-N**

IL23 (IL23A) Mouse Monoclonal Antibody [Clone ID: B-Z23]

Product data:

Product Type:	Primary Antibodies
Clone Name:	B-Z23
Applications:	FN, IHC
Recommended Dilution:	Functional Assays: Neutralises the bioactivity of rhIL-23 on Mouse splenocytes C57Bl/6 (measurement of mL-17 or mL-22 production). Immunohistochemistry on Paraffin Embedded Sections.
Reactivity:	Human
Host:	Mouse
Isotype:	IgG1
Clonality:	Monoclonal
Immunogen:	Recombinant Human IL-23 (sub-unit p19)
Specificity:	This antibody recognizes both recombinant and natural IL-23, p19 sub-unit.
Formulation:	Phosphate-buffered saline. Sterile-filtered through 0.22 µm and treated to remove endotoxins. Carrier and preservative free. State: Azide Free State: Liquid purified IgG fraction
Concentration:	lot specific
Purification:	Ion Exchange Chromatography
Conjugation:	Unconjugated
Storage:	Store the antibody undiluted at 2-8°C.
Stability:	Shelf life: one year from despatch.
Gene Name:	interleukin 23 subunit alpha
Database Link:	Entrez Gene 51561 Human Q9NPF7



[View online »](#)

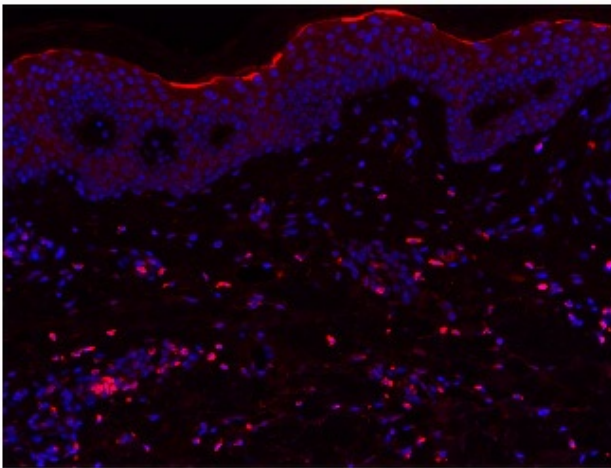
Background: The p19 shares sequence similarity with IL-6 subfamily members and is distantly related to the p35 subunit of IL-12. It shows no biological activity by itself; instead, it combines with the p40 subunit of IL-12 to form a biologically active, composite cytokine, IL-23. IL-23 shares some in vivo functions with IL-12, including the activation of the transcription factor Stat4. Similar to IL-12, human IL-23 stimulates IFN- γ production and proliferation in PHA blast T cells, as well as in CD45RO (memory) T cells. Ubiquitous transgenic expression of the IL-23 subunit p19 induces multiorgan inflammation, runting, infertility, and premature death.

Synonyms: IL-23 subunit alpha, SGRF, Interleukin-23 subunit p19, IL-23p19

Protein Families: Druggable Genome, Secreted Protein

Protein Pathways: Cytokine-cytokine receptor interaction, Jak-STAT signaling pathway

Product images:



Labelling on Paraffin Section from psoriasis lesions with IL23 Antibody Clone B-Z23 diluted at 1/500 (background colouration by DAPI).