

## Product datasheet for **AM31203FC-N**

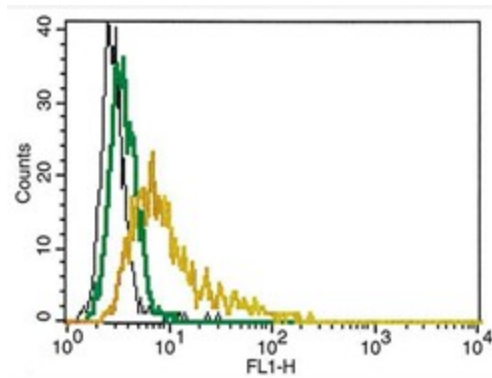
### IP10 (CXCL10) Mouse Monoclonal Antibody [Clone ID: B-C50]

#### Product data:

Product Type:	Primary Antibodies
Clone Name:	B-C50
Applications:	FC
Recommended Dilution:	<b>Flow Cytometry:</b> Use 10 µl to label 10 <sup>6</sup> cells or 100 µl of whole blood.
Reactivity:	Human
Host:	Mouse
Isotype:	IgG2a
Clonality:	Monoclonal
Immunogen:	Recombinant Human IP-10. <b>Hybridoma:</b> Myeloma X63/AG.8653 x Balb/c node cells.
Specificity:	Recognizes both natural and recombinant IP-10.
Formulation:	PBS Label: FITC State: Liquid purified IgG fraction Stabilizer: 5% BSA Preservative: 0.09% Sodium Azide
Purification:	Ion Exchange Chromatography
Conjugation:	FITC
Storage:	Store the antibody undiluted at 2-8°C.
Stability:	Shelf life: one year from despatch.
Gene Name:	C-X-C motif chemokine ligand 10
Database Link:	<a href="#">Entrez Gene 3627 Human P02778</a>
Synonyms:	C-X-C motif chemokine 10, Small-inducible cytokine B10, Gamma-IP10, INP10, SCYB10
Protein Families:	Druggable Genome, Secreted Protein, Transmembrane
Protein Pathways:	Chemokine signaling pathway, Cytokine-cytokine receptor interaction, Cytosolic DNA-sensing pathway, RIG-I-like receptor signaling pathway, Toll-like receptor signaling pathway



[View online »](#)

**Product images:**

We used U937 cells 3 days after passaging. Half were activated with IFN-gamma 100 ng/ml for 20 hours and half were used as control. Cell concentration at the beginning of activation was 2.10e5 cells/ml. Brefaldin A was used as an intracellular blocking agent at 1ug/ml, in contact with the cells for 4 to 6 hours. The black line on the graph represents the IgG2b isotype control (B-E4), the green line shows B-C50 with U937 non-activated cells and the yellow line represents activated U937 cells marked with B-C50 (10µl per test for 5.10e5 cells).