

Product datasheet for **AM31191RP-N**

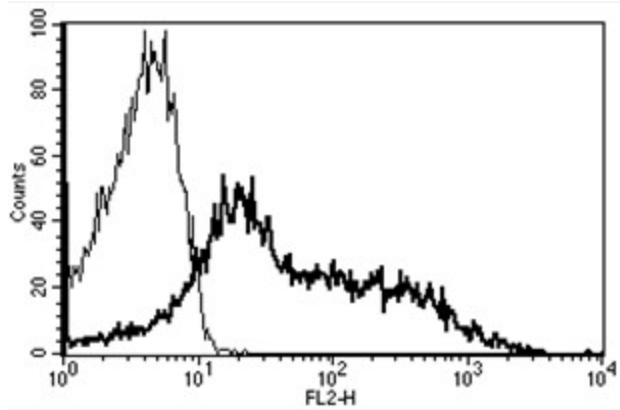
CD62L (SELL) Mouse Monoclonal Antibody [Clone ID: B-S13]

Product data:

Product Type:	Primary Antibodies
Clone Name:	B-S13
Applications:	FC
Recommended Dilution:	Flow Cytometry: Use 10 µl to label 10 ⁶ cells or 100 µl of whole blood.
Reactivity:	Human
Host:	Mouse
Isotype:	IgG1
Clonality:	Monoclonal
Immunogen:	CD62L transfected CHO cells
Specificity:	Recognizes the Leucocyte Endothelial Cell Adhesion Molecule-1 (LECAM-1), L-selectin, a 74-95 kDa protein.
Formulation:	PBS containing 1% BSA as stabilizer and 0.09% Sodium Azide Label: PE State: Lyophilized purified Ig fraction
Reconstitution Method:	Restore with 1.0 ml deionised water.
Purification:	Ion Exchange Chromatography
Conjugation:	PE
Storage:	Store undiluted at 2-8°C. DO NOT FREEZE!
Stability:	Shelf life: 6 month from despatch.
Gene Name:	selectin L
Database Link:	Entrez Gene 6402 Human P14151
Synonyms:	SELL, LNHR, LYAM1, Leu-8, TQ1, gp90-MEL, LECAM1, LAM-1
Protein Families:	Druggable Genome, ES Cell Differentiation/IPS, Transmembrane
Protein Pathways:	Cell adhesion molecules (CAMs)



[View online »](#)

Product images:

A typical staining pattern with the B-S13 monoclonal antibody of lymphocytes