

Product datasheet for **AM31190AF-N**

VCAM1 Mouse Monoclonal Antibody [Clone ID: B-K9]

Product data:

Product Type:	Primary Antibodies
Clone Name:	B-K9
Applications:	ELISA, FC, FN
Recommended Dilution:	ELISA. Flow Cytometry. Functional Assay: Blocks the cell attachment to VCAM-1.
Reactivity:	Human
Host:	Mouse
Isotype:	IgG1
Clonality:	Monoclonal
Immunogen:	Activated Human umbilical vein endothelial cells. Hybridoma: Myeloma X63/AG.8653 x Balb/c spleen cells.
Specificity:	Recognizes the Vascular Cellular Adhesion Molecule-1 (VCAM-1), a 110 kDa protein. Recognizes the soluble antigen.
Formulation:	Phosphate-buffered saline without Carrier and preservatives. This product is sterile-filtered through 0.22 µm and treated to remove Endotoxins. State: Azide Free State: Liquid purified IgG fraction.
Concentration:	lot specific
Purification:	Ion Exchange Chromatography.
Conjugation:	Unconjugated
Storage:	Store the antibody undiluted at 2-8°C.
Stability:	Shelf life: one year from despatch.
Gene Name:	vascular cell adhesion molecule 1
Database Link:	Entrez Gene 7412 Human P19320



[View online »](#)

Background:

CD106 / VCAM-1 (vascular cell adhesion molecule-1) is an Ig-like cell surface adhesion molecule binding VLA-4 integrin. VCAM-1 is a potent T cell costimulatory molecule taking part in their positive selection and survival, as well as in adhesion, transendothelial migration and activation of peripheral T cells. VCAM-1 is also involved in endothelial cell-cell contacts. Whereas VCAM-1 normally mediates leukocyte extravasation to sites of tissue inflammation, tumour cells can use overexpressed VCAM-1 to escape T cell immunity. Soluble form of VCAM-1 (sVCAM-1) is an inflammatory marker and can be used also in prognosis of subsequent cardiovascular events following acute coronary syndromes.

Synonyms:

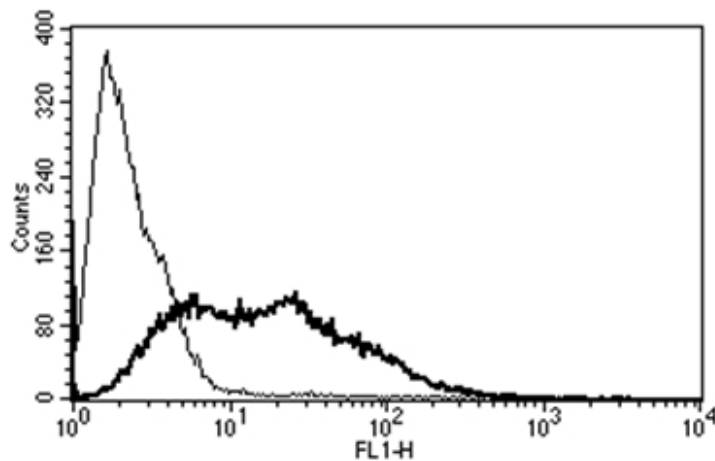
V-CAM 1, INCAM-100, L1CAM, VCAM-1

Protein Families:

Druggable Genome, ES Cell Differentiation/IPS, Transmembrane

Protein Pathways:

Cell adhesion molecules (CAMs), Leukocyte transendothelial migration

Product images:

A typical staining pattern with the B-K9 monoclonal antibody of VCAM-1 transfected CHO cell line.