

## Product datasheet for **AM31189PU-N**

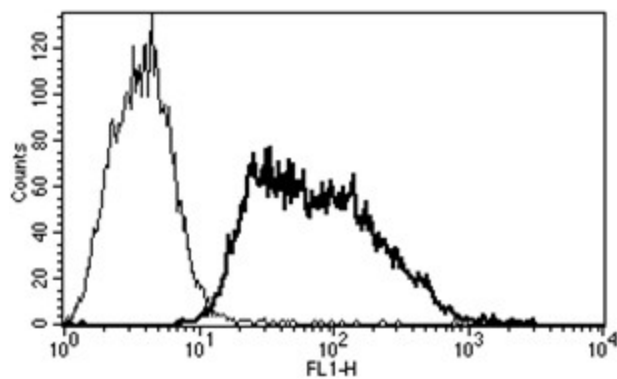
### CD62E (SELE) Mouse Monoclonal Antibody [Clone ID: B-P7]

#### Product data:

Product Type:	Primary Antibodies
Clone Name:	B-P7
Applications:	FC
Recommended Dilution:	Flow Cytometry: Use 10 µl to label 10e6 cells or 100 µl of whole blood.
Reactivity:	Human
Host:	Mouse
Isotype:	IgG1
Clonality:	Monoclonal
Immunogen:	Activated human endothelial cells
Specificity:	Recognises the Endothelial Leucocyte Adhesion Molecule-1 (ELAM-1), E-selectin, a 97 kDa protein.
Formulation:	Phosphate-buffered saline containing 1 % BSA as stabilizer and 0.09 % sodium azide as preservative State: Purified State: Liquid purified Ig fraction
Purification:	Ion exchange chromatography
Conjugation:	Unconjugated
Storage:	Store the antibody undiluted at 2-8°C.
Stability:	Shelf life: one year from despatch.
Gene Name:	selectin E
Database Link:	<a href="#">Entrez Gene 6401 Human P16581</a>
Synonyms:	SELE, ELAM1, LECAM2
Note:	<b>Not</b> suitable for Immunoprecipitation.
Protein Families:	Druggable Genome, Transmembrane
Protein Pathways:	Cell adhesion molecules (CAMs)



[View online »](#)

**Product images:**

A typical staining pattern with the B-P7 monoclonal antibody of ELAM-1 transfected CHO cell line