

## Product datasheet for **AM31184RP-N**

### CD31 (PECAM1) Mouse Monoclonal Antibody [Clone ID: B-B38]

#### Product data:

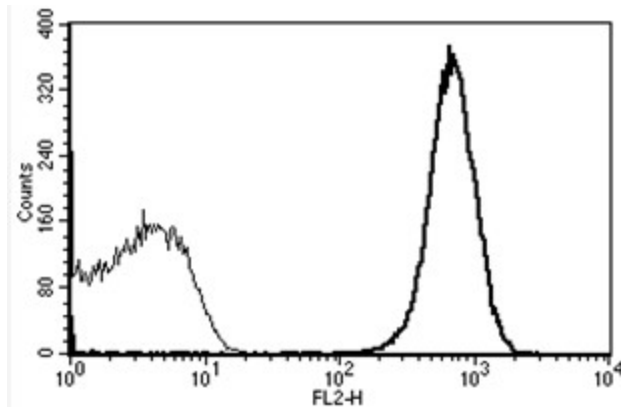
Product Type:	Primary Antibodies
Clone Name:	B-B38
Applications:	FC
Recommended Dilution:	<b>Flow Cytometry:</b> Use 10 µl to label 10 <sup>6</sup> cells or 100 µl of whole blood.
Reactivity:	Human
Host:	Mouse
Isotype:	IgG1
Clonality:	Monoclonal
Immunogen:	Recombinant human CD31
Specificity:	Recognises Platelet Endothelial Cell Adhesion Molecule-1 (PECAM-1), GPIIa', a 130-140 kDa protein.
Formulation:	Phosphate-buffered saline containing 1% BSA as stabilizer and 0.09% sodium azide as preservative Label: PE State: Lyophilized purified Ig fraction Label: R-Phycoerythrin
Reconstitution Method:	Restore with 1.0 ml deionised water.
Purification:	Ion exchange chromatography
Conjugation:	PE
Storage:	Store the antibody undiluted at 2-8°C. <b>DO NOT FREEZE!</b>
Stability:	Shelf life: 6 month from despatch.
Gene Name:	platelet and endothelial cell adhesion molecule 1
Database Link:	<a href="#">Entrez Gene 5175 Human P16284</a>
Synonyms:	PECAM-1, EndoCAM, GPIIA'
Protein Families:	Druggable Genome, ES Cell Differentiation/IPS, Transmembrane



[View online »](#)

Protein Pathways: Cell adhesion molecules (CAMs), Leukocyte transendothelial migration

### Product images:



A typical staining pattern with the B-B38 monoclonal antibody of platelets