

Product datasheet for **AM31184AF-N**

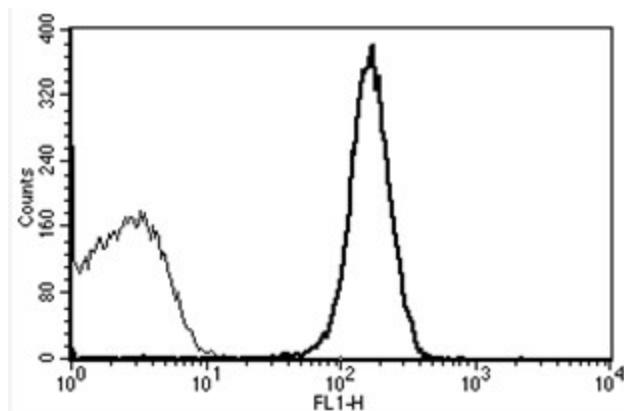
CD31 (PECAM1) Mouse Monoclonal Antibody [Clone ID: B-B38]

Product data:

Product Type:	Primary Antibodies
Clone Name:	B-B38
Applications:	ELISA, FC
Recommended Dilution:	Flow Cytometry.
Reactivity:	Human
Host:	Mouse
Isotype:	IgG1
Clonality:	Monoclonal
Immunogen:	Recombinant human CD31
Specificity:	Recognises the soluble Platelet Endothelial Cell Adhesion Molecule-1 (PECAM-1), GPIIa', a 130-140 kDa protein.
Formulation:	Phosphate-buffered saline. Sterile-filtered through 0.22 µm. Carrier and preservative free State: Azide Free State: Liquid purified Ig fraction
Concentration:	lot specific
Purification:	Ion exchange chromatography
Conjugation:	Unconjugated
Storage:	Store the antibody undiluted at 2-8°C.
Stability:	Shelf life: one year from despatch.
Gene Name:	platelet and endothelial cell adhesion molecule 1
Database Link:	Entrez Gene 5175 Human P16284
Synonyms:	PECAM-1, EndoCAM, GPIIA'
Protein Families:	Druggable Genome, ES Cell Differentiation/IPS, Transmembrane
Protein Pathways:	Cell adhesion molecules (CAMs), Leukocyte transendothelial migration



[View online »](#)

Product images:

A typical staining pattern with the B-B38 monoclonal antibody of platelets