

Product datasheet for **AM31183RP-N**

Integrin beta 1 (ITGB1) Mouse Monoclonal Antibody [Clone ID: B-D15]

Product data:

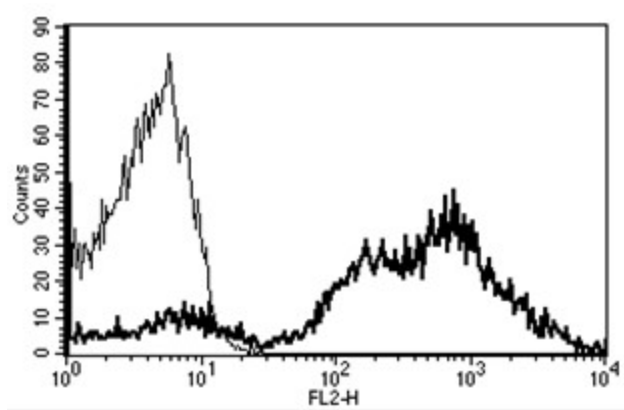
Product Type:	Primary Antibodies
Clone Name:	B-D15
Applications:	FC
Recommended Dilution:	Flow Cytometry: Use 10 µl to label 10 ⁶ cells or 100 µl of whole blood.
Reactivity:	Human
Host:	Mouse
Isotype:	IgG2a
Clonality:	Monoclonal
Immunogen:	U937 cell line
Specificity:	Recognises the GPIIa, integrin b1, VLA-b chain, a 130 kDa protein.
Formulation:	Phosphate-buffered saline containing 1% BSA as stabilizer and 0.09% sodium azide as preservative Label: PE State: Lyophilized purified Ig fraction Label: R-Phycoerythrin
Reconstitution Method:	Restore with 1.0 ml deionised water.
Purification:	Ion exchange chromatography
Conjugation:	PE
Storage:	Store the antibody undiluted at 2-8°C. DO NOT FREEZE!
Stability:	Shelf life: 6 month from despatch.
Gene Name:	integrin subunit beta 1
Database Link:	Entrez Gene 3688 Human P05556
Synonyms:	Fibronectin receptor subunit beta, Integrin VLA-4 subunit beta, ITGB1, FNRB, MDF2, MSK12
Protein Families:	Druggable Genome, ES Cell Differentiation/IPS, Transmembrane



[View online »](#)

Protein Pathways:

Arrhythmogenic right ventricular cardiomyopathy (ARVC), Axon guidance, Cell adhesion molecules (CAMs), Dilated cardiomyopathy, ECM-receptor interaction, Focal adhesion, Hypertrophic cardiomyopathy (HCM), Leukocyte transendothelial migration, Pathogenic Escherichia coli infection, Pathways in cancer, Regulation of actin cytoskeleton, Small cell lung cancer

Product images:

A typical staining pattern with the B-D15 monoclonal antibody of lymphocytes