

Product datasheet for **AM31182RP-N**

CD11a (ITGAL) Mouse Monoclonal Antibody [Clone ID: B-B15]

Product data:

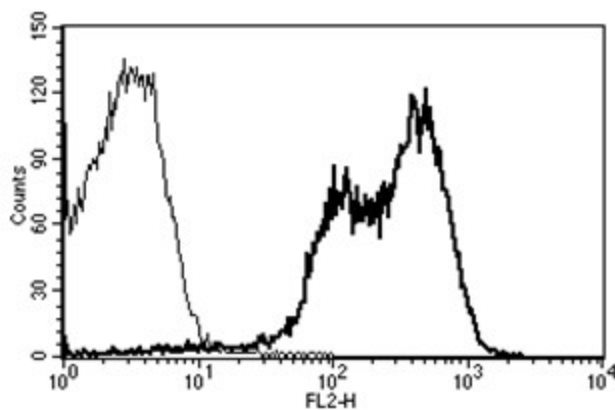
Product Type:	Primary Antibodies
Clone Name:	B-B15
Applications:	FC
Recommended Dilution:	Flow Cytometry: Use 10 µl to label 10 ⁶ cells or 100 µl of whole blood.
Reactivity:	Human
Host:	Mouse
Isotype:	IgG1
Clonality:	Monoclonal
Immunogen:	Human PBL
Specificity:	Recognises the αL integrin of LFA-1 complex, a 180 kDa protein
Formulation:	Phosphate-buffered saline containing 1% BSA as stabilizer and 0.09% sodium azide as preservative Label: PE State: Lyophilized purified Ig fraction Label: R-Phycoerythrin
Reconstitution Method:	Restore with 1.0 ml of deionised water
Purification:	Ion exchange chromatography
Conjugation:	PE
Storage:	Prior to and following reconstitution store the antibody at 2-8°C. DO NOT FREEZE!
Stability:	Shelf life: 6 month from despatch.
Gene Name:	integrin subunit alpha L
Database Link:	Entrez Gene 3683 Human P20701
Synonyms:	Integrin alpha-L, LFA1, LFA-1
Protein Families:	Druggable Genome, ES Cell Differentiation/IPS, Transmembrane



[View online »](#)

Protein Pathways: Cell adhesion molecules (CAMs), Leukocyte transendothelial migration, Natural killer cell mediated cytotoxicity, Regulation of actin cytoskeleton, Viral myocarditis

Product images:



A typical staining pattern with the B-B15 monoclonal antibody of lymphocytes