

## Product datasheet for **AM31182FC-N**

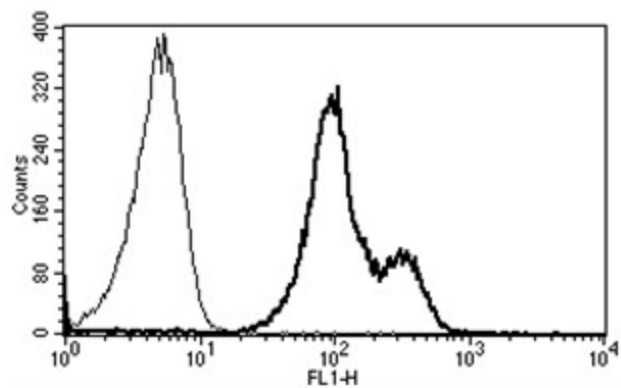
### CD11a (ITGAL) Mouse Monoclonal Antibody [Clone ID: B-B15]

#### Product data:

Product Type:	Primary Antibodies
Clone Name:	B-B15
Applications:	FC
Recommended Dilution:	<b>Flow Cytometry:</b> Use 10 µl to label 10 <sup>6</sup> cells or 100 µl of whole blood.
Reactivity:	Human
Host:	Mouse
Isotype:	IgG1
Clonality:	Monoclonal
Immunogen:	Human PBL
Specificity:	Recognises the αL integrin of LFA-1 complex, a 180 kDa protein.
Formulation:	Phosphate-buffered saline containing 1 % BSA as stabilizer and 0.09 % sodium azide as preservative Label: FITC State: Liquid purified IgG fraction
Purification:	Ion exchange chromatography
Conjugation:	FITC
Storage:	Store the antibody undiluted at 2-8°C.
Stability:	Shelf life: one year from despatch.
Gene Name:	integrin subunit alpha L
Database Link:	<a href="#">Entrez Gene 3683 Human P20701</a>
Synonyms:	Integrin alpha-L, LFA1, LFA-1
Protein Families:	Druggable Genome, ES Cell Differentiation/IPS, Transmembrane
Protein Pathways:	Cell adhesion molecules (CAMs), Leukocyte transendothelial migration, Natural killer cell mediated cytotoxicity, Regulation of actin cytoskeleton, Viral myocarditis



[View online »](#)

**Product images:**

A typical staining pattern with the B-B15 monoclonal antibody of lymphocytes