

Product datasheet for **AM31181BT-N**

CD2 Mouse Monoclonal Antibody [Clone ID: B-E2]

Product data:

Product Type:	Primary Antibodies
Clone Name:	B-E2
Applications:	FC, IHC
Recommended Dilution:	Flow Cytometry: Use 10 µl to label 10 ⁶ cells or 100 µl of whole blood. Immunohistochemistry.
Reactivity:	Human
Host:	Mouse
Isotype:	IgG2b
Clonality:	Monoclonal
Immunogen:	Human thymocytes. Hybridoma: Myeloma X63/AG.8653 x Balb/c spleen cells
Specificity:	Recognizes the Lymphocyte Function associated Antigen-2 (LFA-2), a 50 kDa protein.
Formulation:	PBS containing 5% BSA as stabilizer and 0.09% Sodium Azide as preservative Label: Biotin State: Lyophilized purified IgG fraction.
Reconstitution Method:	Restore with 1.0 ml deionised water.
Purification:	Ion Exchange Chromatography.
Conjugation:	Biotin
Storage:	Prior to reconstitution store at 2-8°C. Following reconstitution store undiluted at 2-8°C for one month or (in aliquots) at -20°C for longer. Avoid repeated freezing and thawing.
Stability:	Shelf life: one year from despatch.
Gene Name:	CD2 molecule
Database Link:	Entrez Gene 914 Human P06729



[View online »](#)

Background:

CD2 which is also known as E-rosette receptor, T11 and lymphocyte-function antigen-2 (LFA-2) is expressed on T cells, thymocytes, and subset of natural killer cells. Human CD2 functions as the receptor for sheep erythrocytes, human CD58 (LFA-3), and CD15s (Sialyl Lewis X). p56lck, p59fyn, CD3eta and CD3epsilon are tyrosine-phosphorylated after CD2 stimulation. CD2 play a role in T cell activation, T- or NK-cell-mediated cytotoxicity, apoptosis in activated peripheral T cells, and regulation of T cell energy.

Synonyms:

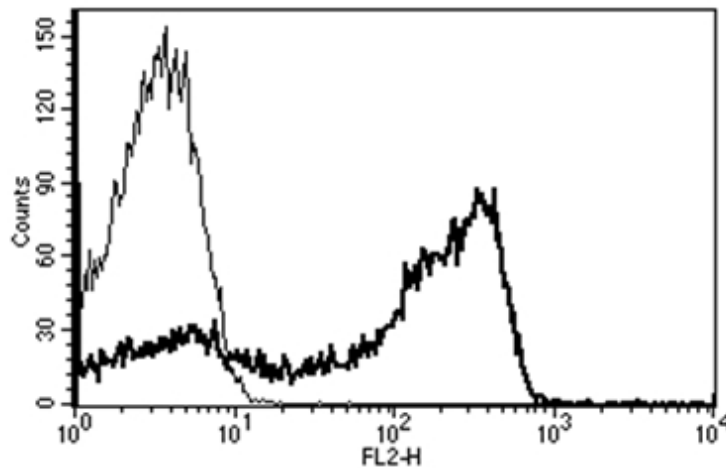
SRBC, Erythrocyte receptor, LFA-2, LFA-3 receptor, Rosette receptor

Protein Families:

Druggable Genome, Transmembrane

Protein Pathways:

Cell adhesion molecules (CAMs), Hematopoietic cell lineage

Product images:

A typical staining pattern with the B-E2 monoclonal antibody of lymphocytes.