

Product datasheet for **AM31181AF-N**

CD2 Mouse Monoclonal Antibody [Clone ID: B-E2]

Product data:

Product Type:	Primary Antibodies
Clone Name:	B-E2
Applications:	FC, FN, IHC
Recommended Dilution:	Flow Cytometry. Immunohistochemistry: 1/50. Functional Assay: Inhibits Mixed Lymphocyte Culture.
Reactivity:	Human
Host:	Mouse
Isotype:	IgG2b
Clonality:	Monoclonal
Immunogen:	Human thymocytes. Hybridoma: Myeloma X63/AG.8653 x Balb/c spleen cells.
Specificity:	Recognizes the Lymphocyte Function associated Antigen-2 (LFA-2), a 50 kDa protein.
Formulation:	PBS without Carrier and preservatives. This product is Sterile-filtered through 0.22 µm and treated to remove endotoxins. State: Azide Free State: Liquid purified IgG fraction
Concentration:	lot specific
Purification:	Ion Exchange Chromatography
Conjugation:	Unconjugated
Storage:	Store the antibody undiluted at 2-8°C.
Stability:	Shelf life: one year from despatch.
Gene Name:	CD2 molecule
Database Link:	Entrez Gene 914 Human P06729



[View online »](#)

Background:

CD2 which is also known as E-rosette receptor, T11 and lymphocyte-function antigen-2 (LFA-2) is expressed on T cells, thymocytes, and subset of natural killer cells. Human CD2 functions as the receptor for sheep erythrocytes, human CD58 (LFA-3), and CD15s (Sialyl Lewis X). p56lck, p59fyn, CD3eta and CD3epsilon are tyrosine-phosphorylated after CD2 stimulation. CD2 play a role in T cell activation, T- or NK-cell-mediated cytotoxicity, apoptosis in activated peripheral T cells, and regulation of T cell energy.

Synonyms:

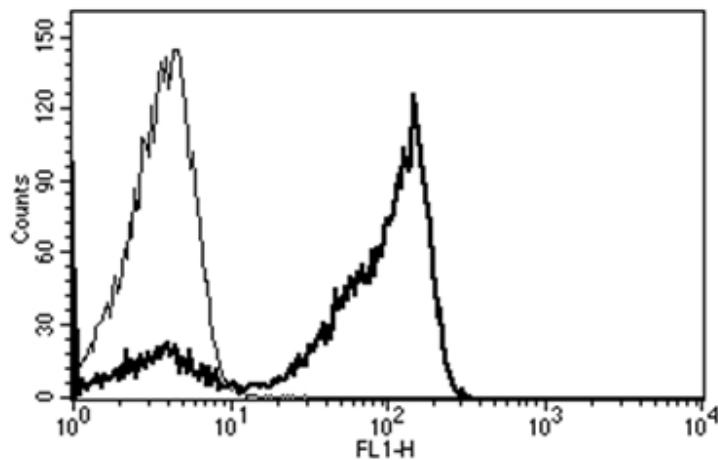
SRBC, Erythrocyte receptor, LFA-2, LFA-3 receptor, Rosette receptor

Protein Families:

Druggable Genome, Transmembrane

Protein Pathways:

Cell adhesion molecules (CAMs), Hematopoietic cell lineage

Product images:

A typical staining pattern with the B-E2 monoclonal antibody of lymphocytes.