

Product datasheet for **AM31179RP-N**

IL13 receptor alpha 2 (IL13RA2) Mouse Monoclonal Antibody [Clone ID: B-D13]

Product data:

Product Type:	Primary Antibodies
Clone Name:	B-D13
Applications:	FC
Recommended Dilution:	Flow Cytometry: Use 10 µl to label 10 ⁶ cells or 100 µl of whole blood.
Reactivity:	Human
Host:	Mouse
Isotype:	IgG1
Clonality:	Monoclonal
Immunogen:	IL-13Ra2 transfected CHO cell line. Hybridoma: Myeloma X63/AG.8653 x Balb/c spleen cells.
Specificity:	Recognizes the soluble antigen. Recognizes the IL-13 receptor α2 (IL-13 Ra2), a 44 kDa protein. Tested on monocyte activation (Secretion IL-6).
Formulation:	PBS Label: PE State: Lyophilized purified IgG fraction Stabilizer: 5% BSA Preservative: 0.09% Sodium Azide
Reconstitution Method:	Restore with 1 ml deionised water.
Purification:	Ion Exchange Chromatography
Conjugation:	PE
Storage:	Store the antibody after reconstitution at 2-8°C. DO NOT FREEZE!
Stability:	Shelf life: Six months from despatch.
Gene Name:	interleukin 13 receptor subunit alpha 2
Database Link:	Entrez Gene 3598 Human Q14627



[View online »](#)

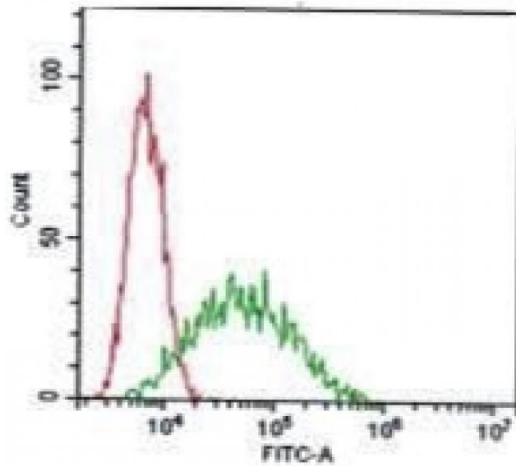
Background: IL13 receptor alpha 2 belongs to the type I cytokine receptor family. Contains 1 fibronectin type-III domain. Binds as a monomer with high affinity to interleukin-13 (IL13), but not to interleukin-4 (IL4). The WSXWS motif appears to be necessary for proper protein folding and thereby efficient intracellular transport and cell-surface receptor binding. The box 1 motif is required for JAK interaction and/or activation.

Synonyms: Interleukin-13 receptor alpha-2 chain, IL13RA2, IL-13RA-2, IL13R, IL13 receptor alpha-2, IL-13R-alpha-2

Protein Families: Druggable Genome, Transmembrane

Protein Pathways: Jak-STAT signaling pathway

Product images:



A typical staining pattern with the B-D13 monoclonal antibody on A375 cell line.