

## Product datasheet for **AM31176AF-N**

### CD130 (IL6ST) Mouse Monoclonal Antibody [Clone ID: B-P4]

#### Product data:

Product Type:	Primary Antibodies
Clone Name:	B-P4
Applications:	FC, FN, IHC, IP, WB
Recommended Dilution:	<b>Western Blot.</b> <b>Immunoprecipitation.</b> <b>Flow Cytometry.</b> <b>Functional Assay:</b> Inhibits IL-11 activity and binding to gp130, but not CNTF, LIF and OSM activities. <b>Immunohistochemistry</b> (Reported in Publications).
Reactivity:	Human
Host:	Mouse
Isotype:	IgG1
Clonality:	Monoclonal
Immunogen:	Natural soluble gp130. <b>Hybridoma:</b> Myeloma X63/AG.8653 x Balb/c spleen cells.
Specificity:	Recognizes the soluble antigen. Recognizes the Gp130, common subunit for IL-6, IL-11, OSM, LIF, CNTF, CT-1 receptors, a 130-140 kDa protein.
Formulation:	Phosphate-buffered saline without carrier and preservatives. This product is sterile-filtered through 0.22 µm. State: Azide Free State: Liquid purified IgG fraction
Concentration:	lot specific
Purification:	Ion Exchange Chromatography
Conjugation:	Unconjugated
Storage:	Store the antibody undiluted at 2-8°C.
Stability:	Shelf life: one year from despatch.
Gene Name:	interleukin 6 signal transducer



[View online »](#)

Database Link: [Entrez Gene 3572 Human P40189](#)

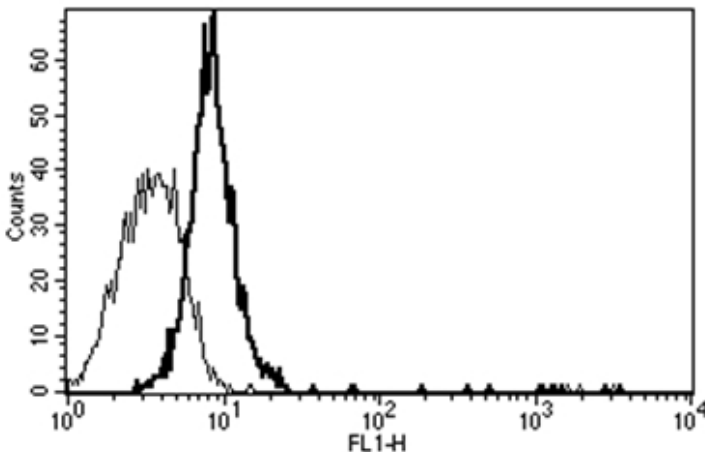
**Background:** IL-6 activates intracellular signaling through binding a receptor consisting of an 80 kDa ligand-binding protein (IL-6R) and a second protein of 130 kDa. IL-6 first binds to IL-6R which subsequently associates with a gp130 dimer. The active signaling complex consists of at minimum IL-6, IL-6R and a dimer of two gp130 proteins that are linked by a disulfide bond. A soluble form of IL-6R is generated by proteolytic cleavage of the membrane-bound precursor and can function as an agonistic molecule that can actively participate in cell-to-cell signaling. The second subunit of the IL-6 complex, gp130, also functions as a component of several additional receptor complexes including leukemia inhibitory factor (LIF), oncostatin M (OSM), ciliary neurotrophic factor (CNTF) and IL-11. LIF binds to the LIF receptor with low affinity and to a complex of the LIF receptor and gp130 with high affinity, while OSM appears to bind to gp130 with low affinity and to a complex of gp130 and the LIF receptor with high affinity.

**Synonyms:** Interleukin-6 receptor subunit beta, IL-6R-beta, IL6 receptor beta

**Protein Families:** Druggable Genome, Secreted Protein, Transmembrane

**Protein Pathways:** Cytokine-cytokine receptor interaction, Jak-STAT signaling pathway

### Product images:



A typical Flow Cytometry staining pattern of Eahy 926 cell line using clone B-P4.