

Product datasheet for **AM31170PU-N**

IL2 Receptor alpha (IL2RA) Mouse Monoclonal Antibody [Clone ID: B-F2]

Product data:

Product Type:	Primary Antibodies
Clone Name:	B-F2
Applications:	FC, IHC
Recommended Dilution:	Flow Cytometry: Use 10 µl to label 10e6 cells or 100 µl of whole blood Immunohistochemistry on paraffin sections.
Reactivity:	Human
Host:	Mouse
Isotype:	IgG1
Clonality:	Monoclonal
Immunogen:	PHA activated T cells
Specificity:	Recognises the Interleukin 2 Receptor a chain (IL-2 Ra), a 55 kDa protein
Formulation:	Phosphate-buffered saline containing 1 % BSA as stabilizer and 0.09 % sodium azide as preservative State: Purified State: Liquid purified Ig fraction
Purification:	Ion exchange chromatography
Conjugation:	Unconjugated
Storage:	Store the antibody undiluted at 2-8°C.
Stability:	Shelf life: one year from despatch.
Gene Name:	interleukin 2 receptor subunit alpha
Database Link:	Entrez Gene 3559 Human P01589
Background:	Genetic variations in IL2RA are associated with susceptibility to diabetes mellitus insulin-dependent type 10 (IDDM10) [MIM:601942]. A multifactorial disorder of glucose homeostasis that is characterized by susceptibility to ketoacidosis in the absence of insulin therapy. Clinical features are polydipsia, polyphagia and polyuria which result from hyperglycemia-induced osmotic diuresis and secondary thirst. These derangements result in long-term complications that affect the eyes, kidneys, nerves, and blood vessels.



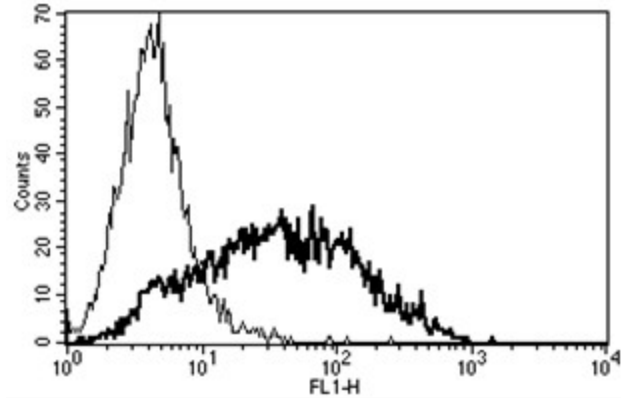
[View online »](#)

Synonyms: Interleukin-2 receptor alpha chain, IL-2 receptor alpha subunit, IL-2-RA, IL2-RA, p55, TAC antigen

Protein Families: Druggable Genome, ES Cell Differentiation/IPS, Transmembrane

Protein Pathways: Cytokine-cytokine receptor interaction, Endocytosis, Hematopoietic cell lineage, Jak-STAT signaling pathway

Product images:



A typical staining pattern with the B-F2 monoclonal antibody of PHA activated lymphocytes