

Product datasheet for **AM31170AF-N**

IL2 Receptor alpha (IL2RA) Mouse Monoclonal Antibody [Clone ID: B-F2]

Product data:

Product Type:	Primary Antibodies
Clone Name:	B-F2
Applications:	FC, FN, IHC
Recommended Dilution:	Flow Cytometry: Functional Assay: Inhibits Mixed Lymphocyte Culture. Immunohistochemistry: 1/50.
Reactivity:	Human
Host:	Mouse
Isotype:	IgG1
Clonality:	Monoclonal
Immunogen:	PHA activated T cells.
Specificity:	Recognizes both soluble and membrane bound Interleukin 2 Receptor a chain (IL-2 Ra), a 55 kDa protein.
Formulation:	Phosphate-buffered saline. Sterile-filtered through 0.22 µm. Carrier and preservative free. State: Azide Free State: Liquid purified IgG fraction
Concentration:	lot specific
Purification:	Ion exchange chromatography
Conjugation:	Unconjugated
Storage:	Store undiluted at 2-8°C.
Stability:	Shelf life: one year from despatch.
Gene Name:	interleukin 2 receptor subunit alpha
Database Link:	Entrez Gene 3559 Human P01589
Synonyms:	Interleukin-2 receptor alpha chain, IL-2 receptor alpha subunit, IL-2-RA, IL2-RA, p55, TAC antigen

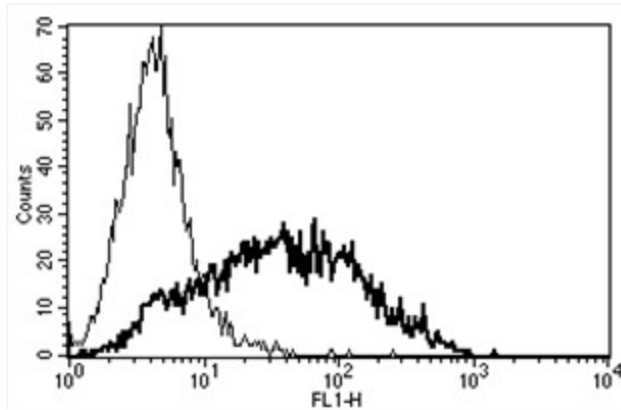


[View online »](#)

Protein Families: Druggable Genome, ES Cell Differentiation/IPS, Transmembrane

Protein Pathways: Cytokine-cytokine receptor interaction, Endocytosis, Hematopoietic cell lineage, Jak-STAT signaling pathway

Product images:



A typical staining pattern with the B-F2 monoclonal antibody of PHA activated lymphocytes