

Product datasheet for **AM31169RP-N**

IL2 Receptor alpha (IL2RA) Mouse Monoclonal Antibody [Clone ID: B-B10]

Product data:

Product Type:	Primary Antibodies
Clone Name:	B-B10
Applications:	FC
Recommended Dilution:	Flow Cytometry: Use 10 µl to label 10 ⁶ cells or 100 µl of whole blood.
Reactivity:	Human
Host:	Mouse
Isotype:	IgG1
Clonality:	Monoclonal
Immunogen:	PHA activated T cells. Hybridoma: Myeloma X63/AG.8653 x Balb/c spleen cells.
Specificity:	Recognises the Interleukin 2 Receptor a chain (IL-2 Ra), a 55 kDa protein.
Formulation:	PBS containing 1% BSA as stabilizer and 0.09% Sodium Azide as preservative. Label: PE State: Lyophilized purified IgG fraction. Label: Phycoerythrin
Reconstitution Method:	Restore with 1.0 ml deionised water.
Purification:	Ion Exchange Chromatography.
Conjugation:	PE
Storage:	Store the antibody undiluted after reconstitution at 2-8°C. DO NOT FREEZE!
Stability:	Shelf life: Six months despatch.
Gene Name:	interleukin 2 receptor subunit alpha
Database Link:	Entrez Gene 3559 Human P01589



[View online »](#)

Background: IL-2R (T-cell growth factor receptor) consists of a chain of 55kDa (also known as Tac antigen or p55 or alpha chain) and a p75 or beta chain. IL-2RA is over-expressed on the surface of activated Tcells, HTLV-1 or -2 positive T-cell lines, and moderately expressed on activated B-cells, NK-cells, and macrophages. CD25 molecule alone appears to function as a low affinity receptor and associates with CD122 (IL-2R beta chain, p75) and CD132 (common gamma chain) to form the high affinity IL-2 receptor complex.

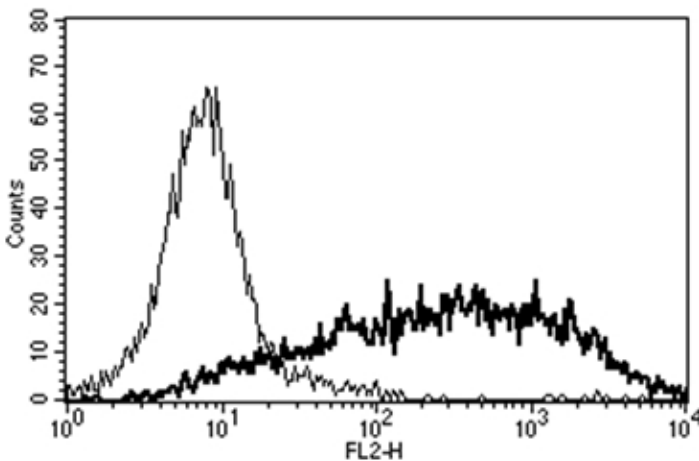
Synonyms: Interleukin-2 receptor alpha chain, IL-2 receptor alpha subunit, IL-2-RA, IL2-RA, p55, TAC antigen

Note: Kd: 0.4 nM

Protein Families: Druggable Genome, ES Cell Differentiation/IPS, Transmembrane

Protein Pathways: Cytokine-cytokine receptor interaction, Endocytosis, Hematopoietic cell lineage, Jak-STAT signaling pathway

Product images:



A typical staining pattern with the B-B10 monoclonal antibody of PHA activated lymphocytes.