

## Product datasheet for **AM31169AF-N**

### IL2 Receptor alpha (IL2RA) Mouse Monoclonal Antibody [Clone ID: B-B10]

#### Product data:

Product Type:	Primary Antibodies
Clone Name:	B-B10
Applications:	FC, FN
Recommended Dilution:	<b>Flow Cytometry.</b> <b>Functional Assay:</b> Inhibits Mixed Lymphocyte Culture.
Reactivity:	Human
Host:	Mouse
Isotype:	IgG1
Clonality:	Monoclonal
Immunogen:	PHA activated T cells. <b>Hybridoma:</b> Myeloma X63/AG.8653 x Balb/c spleen cells
Specificity:	Recognises the Interleukin 2 Receptor a chain (IL-2 Ra), a 55 kDa protein. This antibody recognizes only membrane bound Human IL-2 Ra
Formulation:	Phosphate-buffered saline without Carrier and preservatives. This product is sterile-filtered through 0.22 µm and treated to remove Endotoxins. State: Azide Free State: Liquid purified IgG fraction.
Concentration:	lot specific
Purification:	Ion Exchange Chromatography.
Conjugation:	Unconjugated
Storage:	Store the antibody undiluted at 2-8°C.
Stability:	Shelf life: one year from despatch.
Gene Name:	interleukin 2 receptor subunit alpha
Database Link:	<a href="#">Entrez Gene 3559 Human P01589</a>



[View online »](#)

**Background:** IL-2R (T-cell growth factor receptor) consists of a chain of 55kDa (also known as Tac antigen or p55 or alpha chain) and a p75 or beta chain. IL-2RA is over-expressed on the surface of activated Tcells, HTLV-1 or -2 positive T-cell lines, and moderately expressed on activated B-cells, NK-cells, and macrophages. CD25 molecule alone appears to function as a low affinity receptor and associates with CD122 (IL-2R beta chain, p75) and CD132 (common gamma chain) to form the high affinity IL-2 receptor complex.

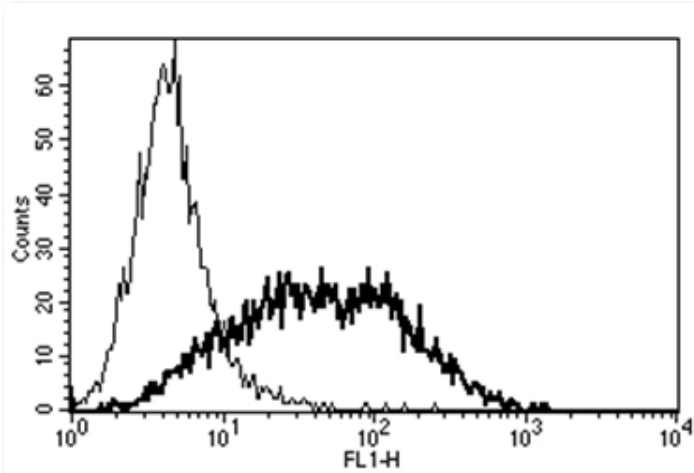
**Synonyms:** Interleukin-2 receptor alpha chain, IL-2 receptor alpha subunit, IL-2-RA, IL2-RA, p55, TAC antigen

**Note:** Kd: 0.4 nM

**Protein Families:** Druggable Genome, ES Cell Differentiation/IPS, Transmembrane

**Protein Pathways:** Cytokine-cytokine receptor interaction, Endocytosis, Hematopoietic cell lineage, Jak-STAT signaling pathway

### Product images:



A typical staining pattern with the B-B10 monoclonal antibody of PHA activated lymphocytes