

Product datasheet for **AM31168PU-N**

Cryptochrome I (CRY1) Mouse Monoclonal Antibody [Clone ID: 4H4-1C4]

Product data:

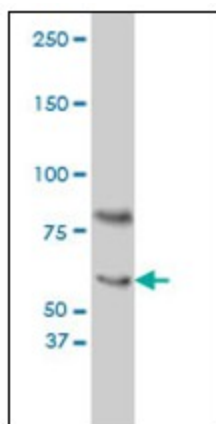
Product Type:	Primary Antibodies
Clone Name:	4H4-1C4
Applications:	ELISA, IF, IHC, WB
Recommended Dilution:	ELISA. Immunofluorescence: 10 µg/ml. Immunohistochemistry on Paraffin Sections: 10 µg/ml. Western Blot.
Reactivity:	Human
Host:	Mouse
Isotype:	IgG1
Clonality:	Monoclonal
Immunogen:	CRY1 antibody was raised against recombinant protein
Specificity:	This antibody reacts to CRY1.
Formulation:	PBS, pH 7.2 State: Purified State: Liquid purified Ig fraction
Concentration:	lot specific
Purification:	Affinity chromatography on Protein A
Conjugation:	Unconjugated
Storage:	Store the antibody undiluted at 2-8°C for one month or (in aliquots) at -20°C for longer. Avoid repeated freezing and thawing.
Stability:	Shelf life: one year from despatch.
Gene Name:	cryptochrome circadian clock 1
Database Link:	Entrez Gene 1407 Human Q16526
Synonyms:	CRY1, PHLL1
Protein Families:	Druggable Genome



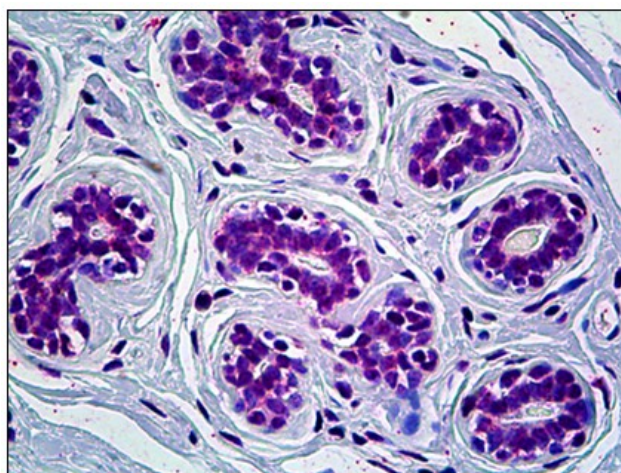
[View online »](#)

Protein Pathways: Circadian rhythm - mammal

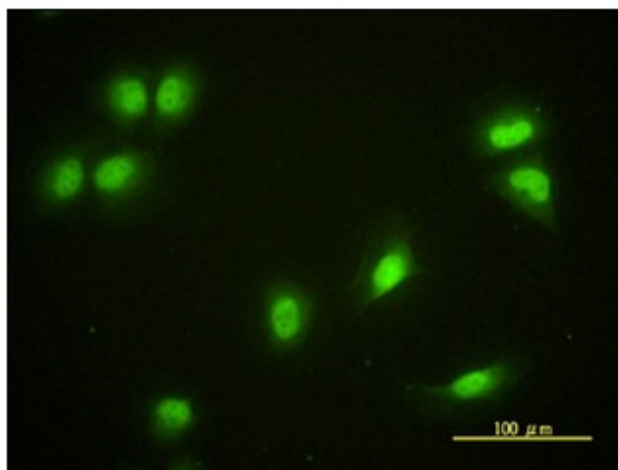
Product images:



CRY1 monoclonal antibody, clone 4H4-1C4
Western Blot analysis of CRY1 expression in HeLa nuclear extract.



Human Breast: Formalin-Fixed, Paraffin-Embedded (FFPE)



Immunofluorescence of monoclonal antibody to CRY1 on HeLa cell. [antibody concentration 10 ug/ml]