

## Product datasheet for **AM31160PU-N**

### DLX2 Mouse Monoclonal Antibody [Clone ID: 2B12]

#### Product data:

Product Type:	Primary Antibodies
Clone Name:	2B12
Applications:	ELISA, IHC, WB
Recommended Dilution:	<b>ELISA.</b> <b>Immunohistochemistry on Paraffin Sections:</b> 5 µg/ml. <b>Western Blot.</b>
Reactivity:	Human, Mouse
Host:	Mouse
Isotype:	IgG2a
Clonality:	Monoclonal
Immunogen:	DLX2 antibody was raised against recombinant protein
Specificity:	This antibody reacts to DLX2.
Formulation:	PBS, pH 7.2 State: Purified State: Liquid purified Ig fraction
Concentration:	lot specific
Purification:	Affinity chromatography on Protein A
Conjugation:	Unconjugated
Storage:	Store the antibody undiluted at 2-8°C for one month or (in aliquots) at -20°C for longer. Avoid repeated freezing and thawing.
Stability:	Shelf life: one year from despatch.
Gene Name:	distal-less homeobox 2
Database Link:	<a href="#">Entrez Gene 13392 Mouse</a> <a href="#">Entrez Gene 1746 Human</a> <a href="#">Q07687</a>



[View online »](#)

**Background:**

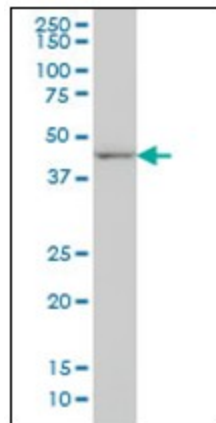
Many vertebrate homeo box-containing genes have been identified on the basis of their sequence similarity with Drosophila developmental genes. Members of the Dlx gene family contain a homeobox that is related to that of Distal-less (Dll), a gene expressed in the head and limbs of the developing fruit fly. The Distal-less (Dlx) family of genes comprises at least 6 different members, DLX1-DLX6. The DLX proteins are postulated to play a role in forebrain and craniofacial development.

**Synonyms:**

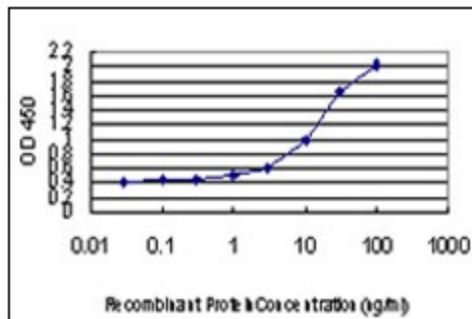
DLX-2, Homeobox protein DLX2

**Protein Families:**

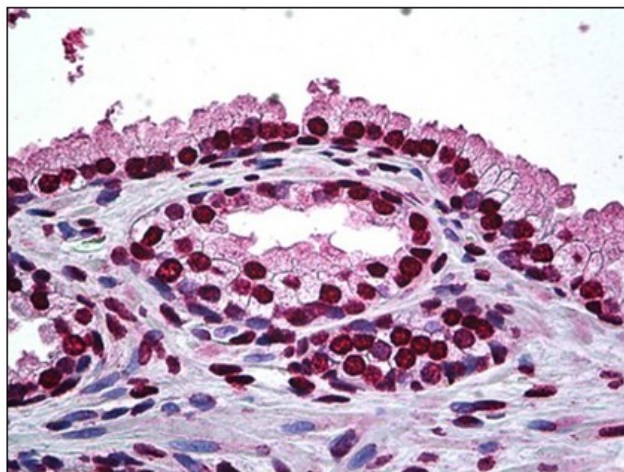
ES Cell Differentiation/IPS, Stem cell relevant signaling - TGFb/BMP signaling pathway, Transcription Factors

**Product images:**


DLX2 monoclonal antibody, clone 2B12 Western Blot analysis of DLX2 expression in NIH/3T3.



Detection limit for recombinant GST tagged DLX2 is approximately 1 ng/ml as a capture antibody.



Human Prostate: Formalin-Fixed, Paraffin-Embedded (FFPE)