

Product datasheet for **AM31158PU-N**

CPS1 Mouse Monoclonal Antibody [Clone ID: 8H8]

Product data:

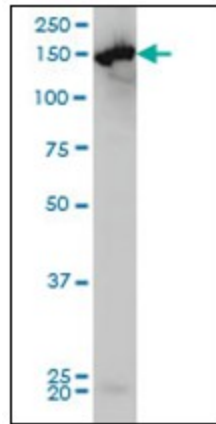
Product Type:	Primary Antibodies
Clone Name:	8H8
Applications:	ELISA, IHC, WB
Recommended Dilution:	ELISA. Immunohistochemistry on Paraffin Sections: 5 µg/ml. Western Blot.
Reactivity:	Human
Host:	Mouse
Isotype:	IgG1
Clonality:	Monoclonal
Immunogen:	CPS1 antibody was raised against recombinant protein
Specificity:	This antibody reacts to CPS1.
Formulation:	PBS, pH 7.2 State: Purified State: Liquid purified Ig fraction
Concentration:	lot specific
Purification:	Affinity chromatography on Protein A
Conjugation:	Unconjugated
Storage:	Store the antibody undiluted at 2-8°C for one month or (in aliquots) at -20°C for longer. Avoid repeated freezing and thawing.
Stability:	Shelf life: one year from despatch.
Gene Name:	carbamoyl-phosphate synthase 1
Database Link:	Entrez Gene 1373 Human P31327
Synonyms:	CPSase I
Protein Families:	Druggable Genome



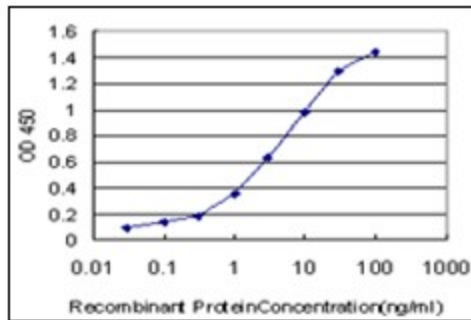
[View online »](#)

Protein Pathways: Alanine, aspartate and glutamate metabolism, Arginine and proline metabolism, Metabolic pathways, Nitrogen metabolism

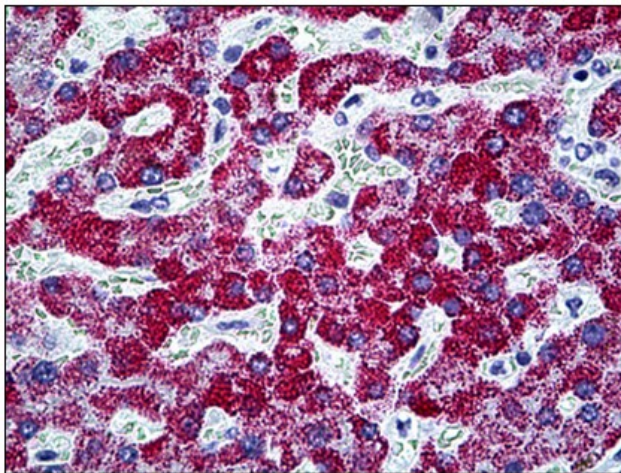
Product images:



CPS1 monoclonal antibody, clone 8H8 Western Blot analysis of CPS1 expression in HeLa.



Detection limit for recombinant GST tagged CPS1 is approximately 0.03ng/ml as a capture antibody.



Human Liver: Formalin-Fixed, Paraffin-Embedded (FFPE)