

Product datasheet for **AM31147PU-N**

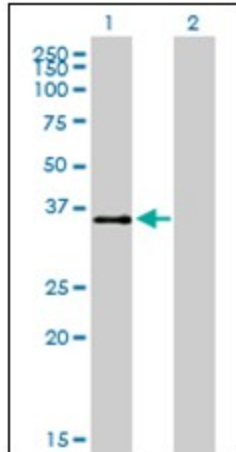
ATF1 Mouse Monoclonal Antibody [Clone ID: 3E7]

Product data:

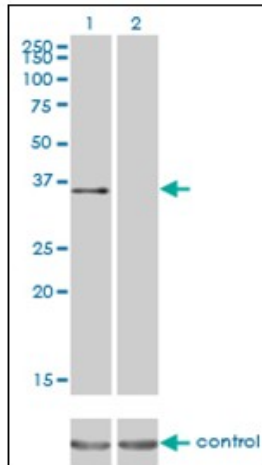
Product Type:	Primary Antibodies
Clone Name:	3E7
Applications:	ELISA, IHC, WB
Recommended Dilution:	ELISA. Immunohistochemistry on Paraffin Sections: 2.5 µg/ml. Western Blot.
Reactivity:	Human
Host:	Mouse
Isotype:	IgG1
Clonality:	Monoclonal
Immunogen:	ATF1 antibody was raised against recombinant protein
Specificity:	This antibody reacts to ATF1.
Formulation:	PBS, pH 7.2 State: Purified State: Liquid purified Ig fraction
Concentration:	lot specific
Purification:	Affinity chromatography on Protein A
Conjugation:	Unconjugated
Storage:	Store the antibody undiluted at 2-8°C for one month or (in aliquots) at -20°C for longer. Avoid repeated freezing and thawing.
Stability:	Shelf life: one year from despatch.
Gene Name:	activating transcription factor 1
Database Link:	Entrez Gene 466 Human P18846
Synonyms:	ATF-1, Activating transcription factor 1, Protein TREB36
Protein Families:	Druggable Genome, Transcription Factors



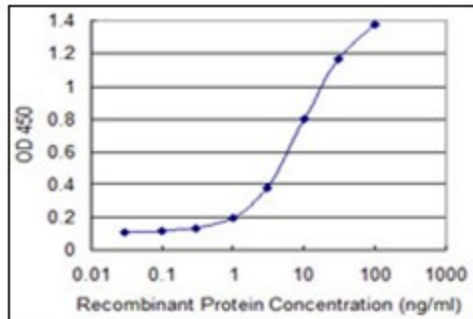
[View online »](#)

Product images:


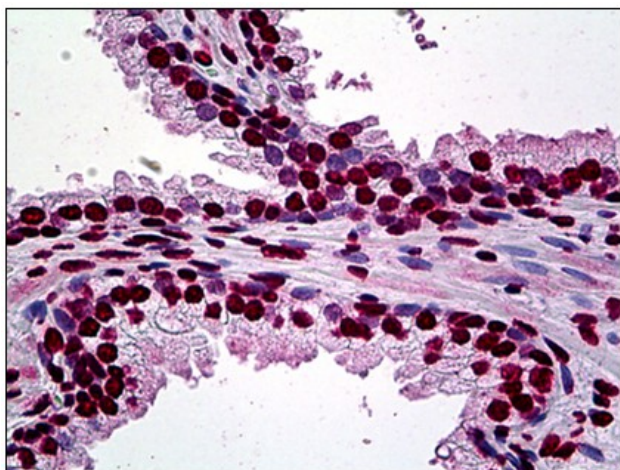
Western Blot analysis of ATF1 expression in transfected 293T cell line by ATF1 monoclonal antibody, clone 3E7.



Western blot analysis of ATF1 over-expressed 293 cell line, cotransfected with ATF1 Validated Chimera RNAi (Lane 2) or non-transfected control (Lane 1). Blot probed with ATF1 monoclonal antibody (3E7). GAPDH (36.1 kDa) used as specificity and loading control.



Detection limit for recombinant GST tagged ATF1 is 0.3 ng/ml as a capture antibody.



Human Prostate: Formalin-Fixed, Paraffin-Embedded (FFPE)