

Product datasheet for **AM31142PU-N**

Acid Phosphatase 2 (ACP2) Mouse Monoclonal Antibody [Clone ID: M1-4A12]

Product data:

Product Type:	Primary Antibodies
Clone Name:	M1-4A12
Applications:	ELISA, IF, IHC, WB
Recommended Dilution:	ELISA. Immunofluorescence: 10 µg/ml. Immunohistochemistry on Paraffin Sections: 10 µg/ml. Western Blot.
Reactivity:	Human
Host:	Mouse
Isotype:	IgG2b
Clonality:	Monoclonal
Immunogen:	ACP2 antibody was raised against recombinant protein
Specificity:	This antibody reacts to ACP2 / Acid Phosphatase 2.
Formulation:	PBS, pH 7.2 State: Purified State: Liquid purified Ig fraction
Concentration:	lot specific
Purification:	Affinity chromatography on Protein A
Conjugation:	Unconjugated
Storage:	Store the antibody undiluted at 2-8°C for one month or (in aliquots) at -20°C for longer. Avoid repeated freezing and thawing.
Stability:	Shelf life: one year from despatch.
Gene Name:	acid phosphatase 2, lysosomal
Database Link:	Entrez Gene 53 Human P11117



[View online »](#)

Background:

Lysosomal acid phosphatase is comprised of two subunits, alpha and beta, and is chemically and genetically distinct from red cell acid phosphatase. Lysosomal acid phosphatase 2 is a member of a family of distinct isoenzymes which hydrolyze orthophosphoric monoesters to alcohol and phosphate. Acid phosphatase deficiency is caused by mutations in the ACP2 (beta subunit) and ACP3 (alpha subunit) genes.

Synonyms:

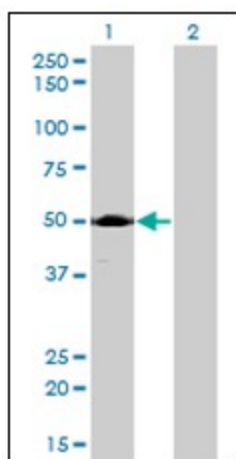
Lysosomal acid phosphatase

Protein Families:

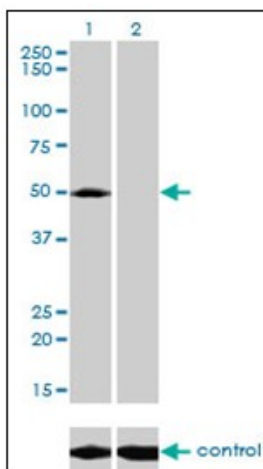
Druggable Genome, Transmembrane

Protein Pathways:

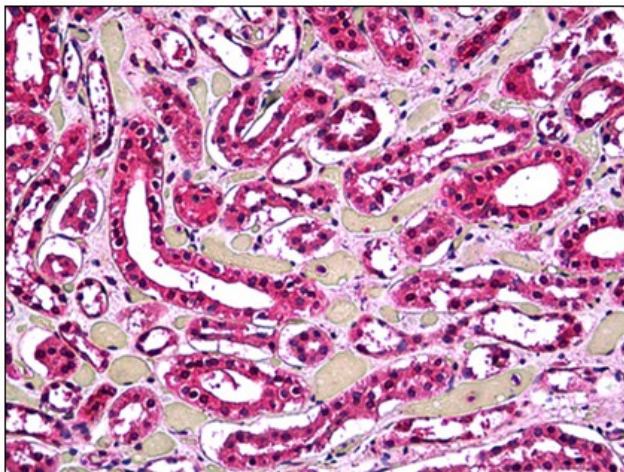
Lysosome, Riboflavin metabolism

Product images:


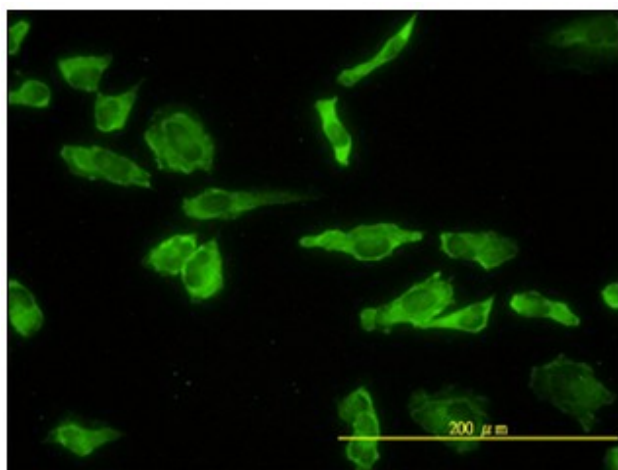
Western Blot analysis of ACP2 expression in transfected 293T cell line by ACP2 monoclonal antibody, clone M1-4A12.



Western blot analysis of ACP2 over-expressed 293 cell line, cotransfected with ACP2 Validated Chimera RNAi (Lane 2) or non-transfected control (Lane 1). Blot probed with ACP2 monoclonal antibody, clone M1-4A12.



Human Kidney, Tubules: Formalin-Fixed, Paraffin-Embedded (FFPE)



Immunofluorescence of monoclonal antibody to ACP2 on HeLa cell. [antibody concentration 10 ug/ml]