

Product datasheet for **AM31130PU-N**

myosin heavy chain 9 (MYH9) Mouse Monoclonal Antibody [Clone ID: 4H3]

Product data:

Product Type:	Primary Antibodies
Clone Name:	4H3
Applications:	ELISA, IF, IHC, WB
Recommended Dilution:	ELISA. Immunofluorescence: 10 µg/ml. Immunohistochemistry on Paraffin Sections: 5 µg/ml. Western Blot.
Reactivity:	Human
Host:	Mouse
Isotype:	IgG2b
Clonality:	Monoclonal
Immunogen:	MYH9 (-, 131 a.a. ~ 221 a.a) partial recombinant protein with GST tag.
Specificity:	This antibody recognizes Myosin-9 / MYH9.
Formulation:	PBS, pH 7.2 State: Purified State: Liquid purified Ig fraction
Concentration:	lot specific
Purification:	Affinity Chromatography on Protein A
Conjugation:	Unconjugated
Storage:	Store the antibody undiluted at 2-8°C for one month or (in aliquots) at -20°C for longer. Avoid repeated freezing and thawing.
Stability:	Shelf life: one year from despatch.
Gene Name:	myosin, heavy chain 9, non-muscle
Database Link:	Entrez Gene 4627 Human P35579
Synonyms:	Myosin heavy chain 9, Myosin heavy chain, non-muscle IIa, Non-muscle myosin heavy chain IIa, Cellular myosin heavy chain, type A, Non-muscle myosin heavy chain A

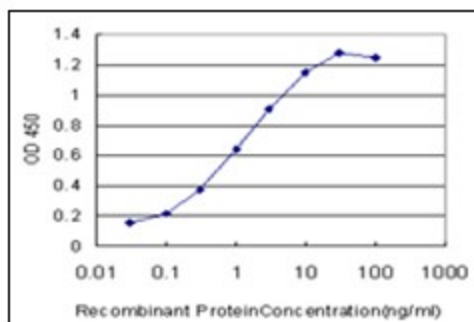


[View online »](#)

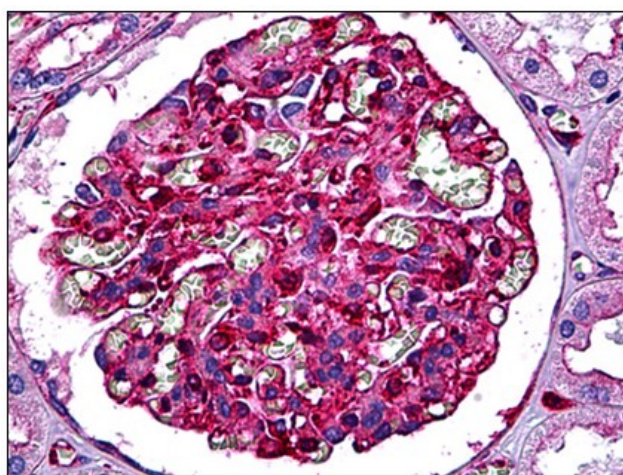
Protein Families: Druggable Genome

Protein Pathways: Regulation of actin cytoskeleton, Tight junction, Viral myocarditis

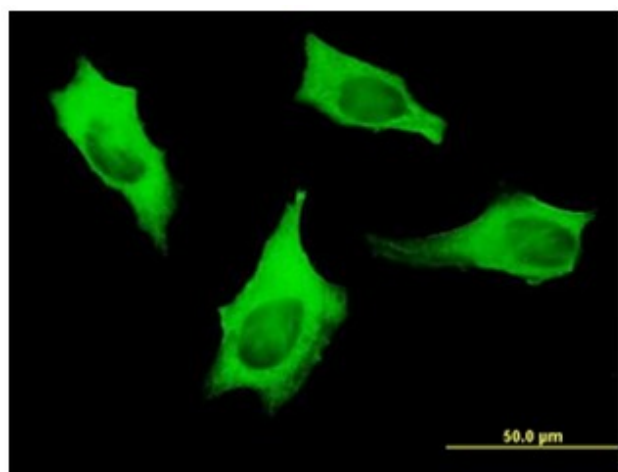
Product images:



Detection limit for recombinant GST tagged MYH9 is approximately 0.03ng/ml as a capture antibody.



Human Kidney, Glomeruli: Formalin-Fixed, Paraffin-Embedded (FFPE)



Immunofluorescence of monoclonal antibody to MYH9 on HeLa cell. [antibody concentration 10 ug/ml]