

Product datasheet for **AM31126PU-N**

MEF2A (71-170) Mouse Monoclonal Antibody [Clone ID: 1A10]

Product data:

Product Type:	Primary Antibodies
Clone Name:	1A10
Applications:	ELISA, IF, IHC, WB
Recommended Dilution:	ELISA. Immunofluorescence: 10 µg/ml. Immunohistochemistry on Paraffin Sections: 2.5 µg/ml. Western Blot: 1/500 - 1/1000.
Reactivity:	Human
Host:	Mouse
Isotype:	IgG2a
Clonality:	Monoclonal
Immunogen:	MEF2A (AAH13437, 71 a.a. ~ 170 a.a) partial recombinant protein with GST tag
Specificity:	This antibody reacts to MEF2A at aa 71-170.
Formulation:	PBS, pH 7.4 State: Purified State: Liquid purified Ig fraction
Concentration:	lot specific
Purification:	Affinity chromatography on Protein A
Conjugation:	Unconjugated
Storage:	Store undiluted at 2-8°C for one month or (in aliquots) at -20°C for longer. Avoid repeated freezing and thawing.
Stability:	Shelf life: one year from despatch.
Gene Name:	myocyte enhancer factor 2A
Database Link:	Entrez Gene 4205 Human Q02078



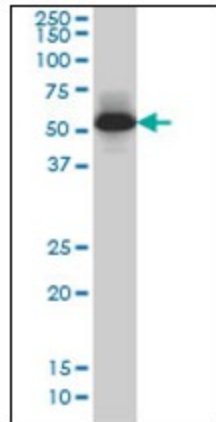
[View online »](#)

Background: Transcriptional activator which binds specifically to the MEF2 element, 5'-YTA[AT]4TAR-3', found in numerous muscle-specific genes. Also involved in the activation of numerous growth factor- and stress-induced genes. Mediates cellular functions not only in skeletal and cardiac muscle development, but also in neuronal differentiation and survival.

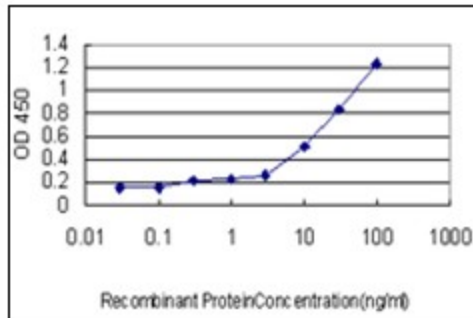
Synonyms: MEF2, Myocyte-specific enhancer factor 2A

Protein Families: Transcription Factors

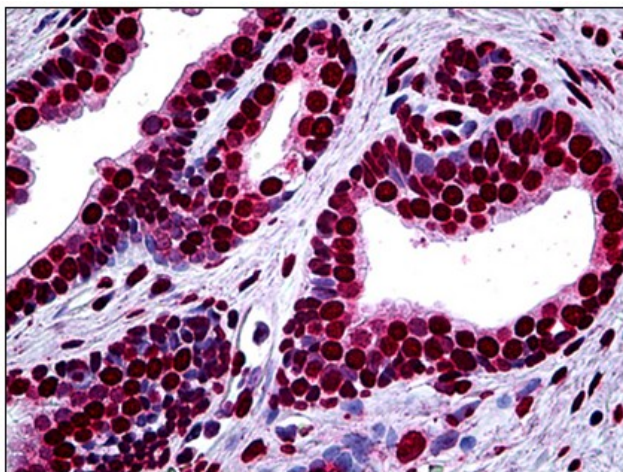
Product images:



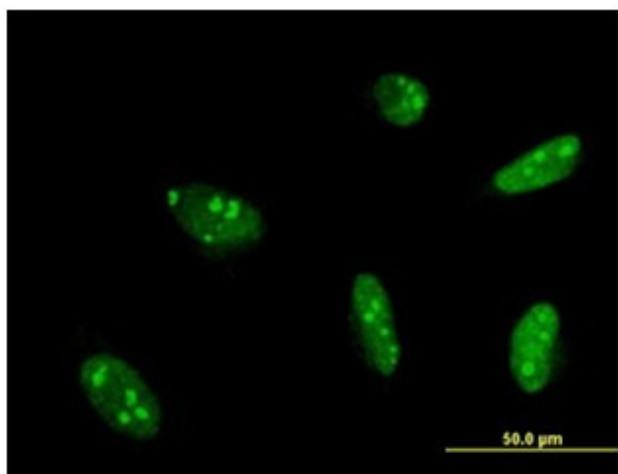
MEF2A monoclonal antibody clone 1A10. Western Blot analysis of MEF2A expression in human lung cancer.



Detection limit for recombinant GST tagged MEF2A is approximately 0.3ng/ml as a capture antibody.



Human Prostate: Formalin-Fixed, Paraffin-Embedded (FFPE)



Immunofluorescence of monoclonal antibody to MEF2A on HeLa cell. [antibody concentration 10 ug/ml]