

## Product datasheet for **AM31125PU-N**

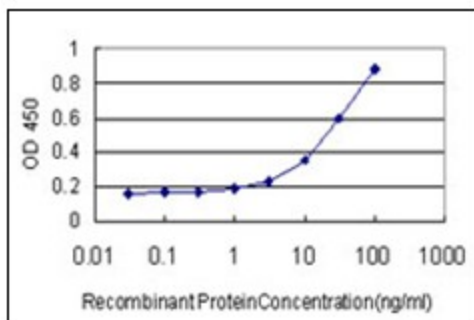
### MEF2A Mouse Monoclonal Antibody [Clone ID: 3F6]

#### Product data:

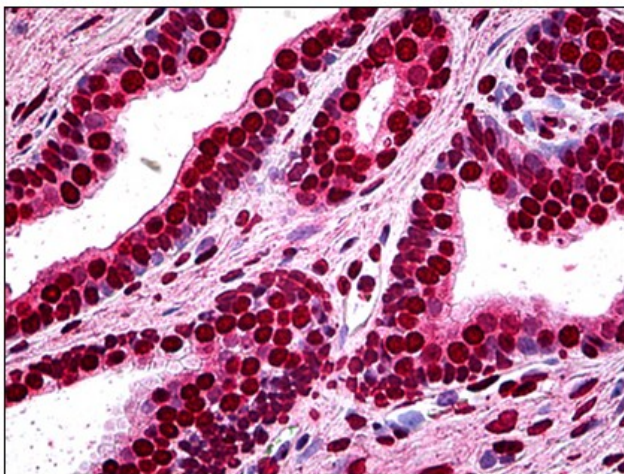
Product Type:	Primary Antibodies
Clone Name:	3F6
Applications:	ELISA, IHC, WB
Recommended Dilution:	<b>ELISA.</b> <b>Immunohistochemistry on Paraffin Sections:</b> 2.5 µg/ml. <b>Western Blot.</b>
Reactivity:	Human
Host:	Mouse
Isotype:	IgG2b
Clonality:	Monoclonal
Immunogen:	MEF2A antibody was raised against recombinant protein
Specificity:	This antibody reacts to MEF2A.
Formulation:	PBS, pH 7.2 State: Purified State: Liquid purified Ig fraction
Concentration:	lot specific
Purification:	Affinity chromatography on Protein A
Conjugation:	Unconjugated
Storage:	Store the antibody undiluted at 2-8°C for one month or (in aliquots) at -20°C for longer. Avoid repeated freezing and thawing.
Stability:	Shelf life: one year from despatch.
Gene Name:	myocyte enhancer factor 2A
Database Link:	<a href="#">Entrez Gene 4205 Human Q02078</a>
Synonyms:	MEF2, Myocyte-specific enhancer factor 2A
Protein Families:	Transcription Factors



[View online »](#)

**Product images:**

Detection limit for recombinant GST tagged MEF2A is approximately 1 ng/ml as a capture antibody.



Human Prostate: Formalin-Fixed, Paraffin-Embedded (FFPE)