

## Product datasheet for **AM31122PU-N**

### **PIM1 Mouse Monoclonal Antibody [Clone ID: 6A2]**

#### **Product data:**

Product Type:	Primary Antibodies
Clone Name:	6A2
Applications:	ELISA, IF, IHC
Recommended Dilution:	<b>ELISA.</b> <b>Immunofluorescence:</b> 10 µg/ml. <b>Immunohistochemistry on Paraffin Sections:</b> 5 µg/ml.
Reactivity:	Human
Host:	Mouse
Isotype:	IgG1
Clonality:	Monoclonal
Immunogen:	PIM1 antibody was raised against recombinant protein
Specificity:	This antibody reacts to PIM1.
Formulation:	PBS, pH 7.2 State: Purified State: Liquid purified Ig fraction
Concentration:	lot specific
Purification:	Affinity chromatography on Protein A
Conjugation:	Unconjugated
Storage:	Store the antibody undiluted at 2-8°C for one month or (in aliquots) at -20°C for longer. Avoid repeated freezing and thawing.
Stability:	Shelf life: one year from despatch.
Gene Name:	Pim-1 proto-oncogene, serine/threonine kinase
Database Link:	<a href="#">Entrez Gene 5292 Human P11309</a>



[View online »](#)

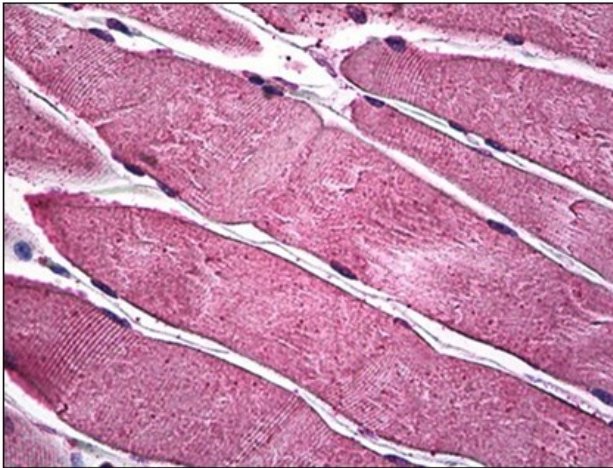
**Background:** PIM-1, an immediate early gene in the PIM subfamily of kinases, has been implicated in the regulation of proliferation, differentiation and cell survival of lymphoid and myeloid cells. PIM-1 is a cytoplasmic modulator of the interleukin-3 signal transduction pathway. Two isoforms of PIM-1 exist: the larger protein is an amino-terminal extension of the smaller protein and is synthesized by alternative translation initiation at an upstream CUG codon.

**Synonyms:** Pim-1

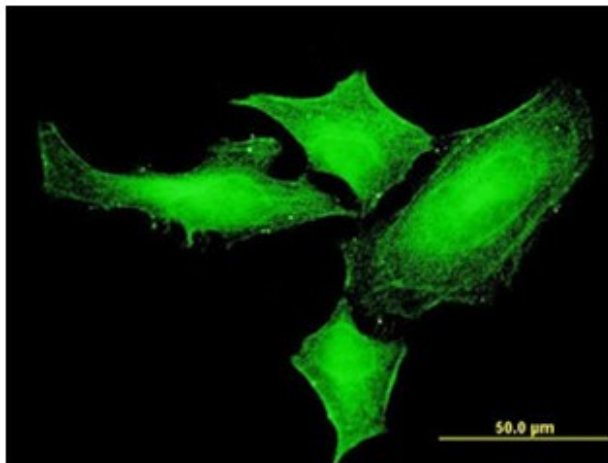
**Protein Families:** Druggable Genome, ES Cell Differentiation/IPS, Protein Kinase

**Protein Pathways:** Acute myeloid leukemia, Jak-STAT signaling pathway

**Product images:**



Human Skeletal Muscle: Formalin-Fixed, Paraffin-Embedded (FFPE)



Immunofluorescence of monoclonal antibody to PIM1 on HeLa cell. [antibody concentration 10 ug/ml]