

Product datasheet for **AM31118PU-N**

Natriuretic Peptide Receptor B (NPR2) Mouse Monoclonal Antibody [Clone ID: 1E4]

Product data:

Product Type:	Primary Antibodies
Clone Name:	10000
Applications:	ELISA, IHC, WB
Recommended Dilution:	ELISA IHC IHC-P (5 µg/ml) WB
Reactivity:	Human
Host:	Mouse
Isotype:	IgG2b, kappa
Clonality:	Monoclonal
Immunogen:	NPR2 (-, 131 aa ~ 231 aa) partial recombinant protein with GST tag. MW of the GST tag alone is 26 KDa.
Specificity:	Human NPR2
Formulation:	PBS, pH 7.4
Concentration:	lot specific
Purification:	Purified from ascites by Protein A
Conjugation:	Unconjugated
Storage:	Short term: store at 4°C. Long term: aliquot and store at -20°C. Avoid freeze-thaw cycles.
Stability:	12 months from date of despatch
Gene Name:	natriuretic peptide receptor 2
Database Link:	Entrez Gene 4882 Human P20594
Background:	NPR2 antibody LS-B5483 is an unconjugated mouse monoclonal antibody to human NPR2 (NPRB). Validated for ELISA, IHC and WB. Tested on 20 paraffin-embedded human tissues.
Synonyms:	NPR2, ANPRB, AMDM, ANP-B, ANPR-B, ANPb, Guanylate cyclase B, GUCY2B, GC-B, GUC2B, Natriuretic peptide receptor B, NPR-B, NPRB, Natriuretic peptide receptor 2, NPRBi



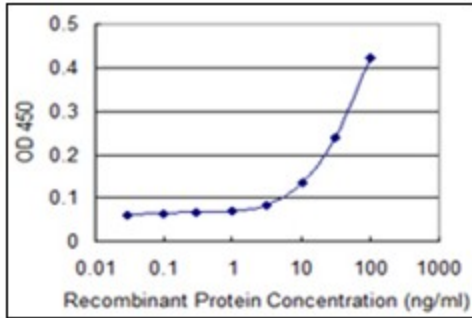
[View online »](#)

Note: Immunohistochemistry: Formalin-fixed paraffin-embedded sections. Sandwich ELISA: Recombinant protein. Western blot with the recombinant protein used as the immunogen.

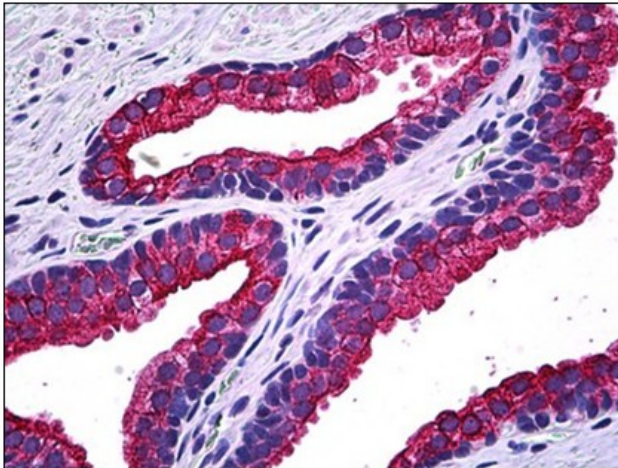
Protein Families: Druggable Genome, Protein Kinase

Protein Pathways: Purine metabolism, Vascular smooth muscle contraction

Product images:



Detection limit for recombinant GST tagged NPR2 is 3 ng/ml as a capture antibody.



Human Prostate: Formalin-Fixed, Paraffin-Embedded (FFPE)