

## Product datasheet for **AM31116PU-N**

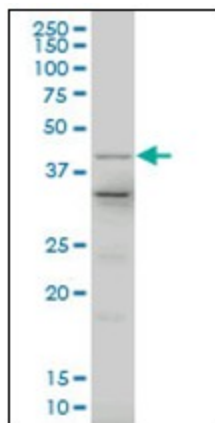
### LHX4 Mouse Monoclonal Antibody [Clone ID: 1D6]

#### Product data:

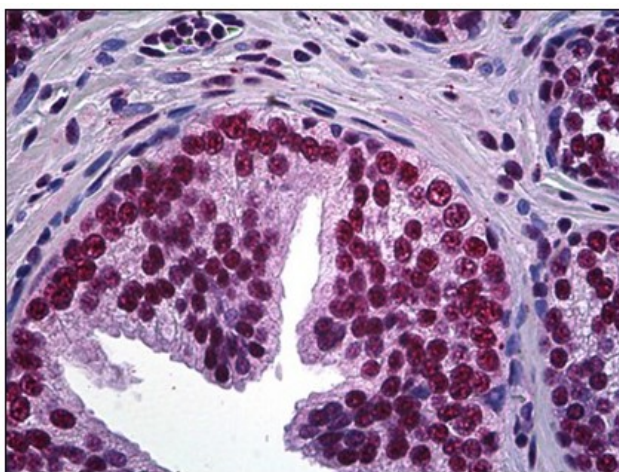
Product Type:	Primary Antibodies
Clone Name:	1D6
Applications:	ELISA, IHC, WB
Recommended Dilution:	<b>ELISA.</b> <b>Immunohistochemistry on Paraffin Sections:</b> 5 µg/ml. <b>Western Blot.</b>
Reactivity:	Human
Host:	Mouse
Isotype:	IgG2a
Clonality:	Monoclonal
Immunogen:	LHX4 antibody was raised against recombinant protein
Specificity:	This antibody reacts to LHX4.
Formulation:	PBS, pH 7.2 State: Purified State: Liquid purified Ig fraction
Concentration:	lot specific
Purification:	Affinity chromatography on Protein A
Conjugation:	Unconjugated
Storage:	Store the antibody undiluted at 2-8°C for one month or (in aliquots) at -20°C for longer. Avoid repeated freezing and thawing.
Stability:	Shelf life: one year from despatch.
Gene Name:	LIM homeobox 4
Database Link:	<a href="#">Entrez Gene 89884 Human Q969G2</a>
Synonyms:	LHX4, LIM/homeobox protein Lhx4, LIM homeobox protein 4
Protein Families:	Druggable Genome, Transcription Factors



[View online »](#)

**Product images:**

Western Blot analysis of LHX4 expression in human spleen with LHX4 monoclonal antibody, clone 1D6.



Human Prostate: Formalin-Fixed, Paraffin-Embedded (FFPE)