

## Product datasheet for **AM31114PU-N**

### **FBXO11 Mouse Monoclonal Antibody [Clone ID: 4C12]**

#### **Product data:**

Product Type:	Primary Antibodies
Clone Name:	4C12
Applications:	ELISA, IF, IHC, WB
Recommended Dilution:	<b>ELISA.</b> <b>Immunofluorescence:</b> 10 µg/ml. <b>Immunohistochemistry on Paraffin Sections:</b> 2.5 µg/ml. <b>Western Blot.</b>
Reactivity:	Human
Host:	Mouse
Isotype:	IgG2a
Clonality:	Monoclonal
Immunogen:	FBXO11 antibody was raised against recombinant protein
Specificity:	This antibody reacts to FBXO11.
Formulation:	PBS, pH 7.2 State: Purified State: Liquid purified Ig fraction
Concentration:	lot specific
Purification:	Affinity chromatography on Protein A
Conjugation:	Unconjugated
Storage:	Store the antibody undiluted at 2-8°C for one month or (in aliquots) at -20°C for longer. Avoid repeated freezing and thawing.
Stability:	Shelf life: one year from despatch.
Gene Name:	F-box protein 11
Database Link:	<a href="#">Entrez Gene 80204 Human</a> <a href="#">Q86XK2</a>



[View online »](#)

**Background:**

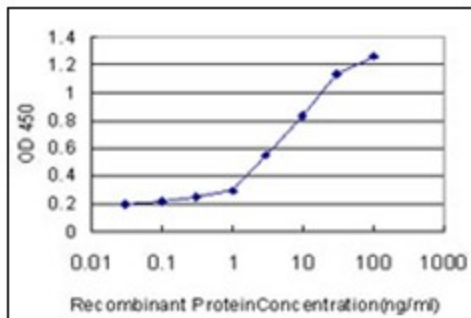
This gene encodes a member of the F-box protein family which is characterized by an approximately 40 amino acid motif, the F-box. The F-box proteins constitute one of the four subunits of ubiquitin protein ligase complex called SCFs (SKP1-cullin-F-box), which function in phosphorylation-dependent ubiquitination. The F-box proteins are divided into 3 classes: Fbws containing WD-40 domains, Fbls containing leucine-rich repeats, and Fbxs containing either different protein-protein interaction modules or no recognizable motifs. The protein encoded by this gene belongs to the Fbxs class. Alternatively spliced transcript variants encoding distinct isoforms have been identified for this gene.

**Synonyms:**

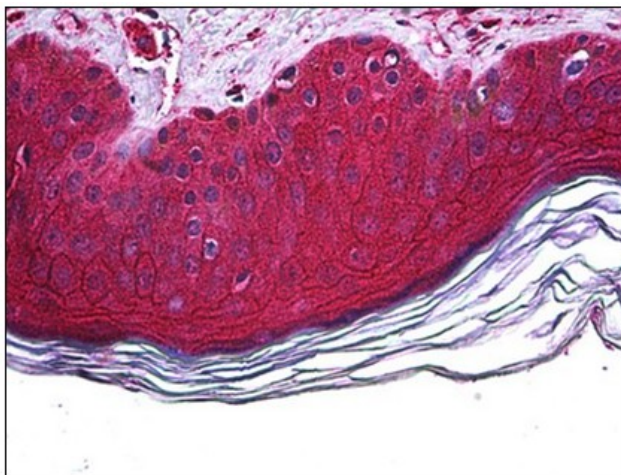
F-box only protein 11, FBX11, VIT1, UG063H01, Vitiligo-associated protein 1

**Protein Families:**

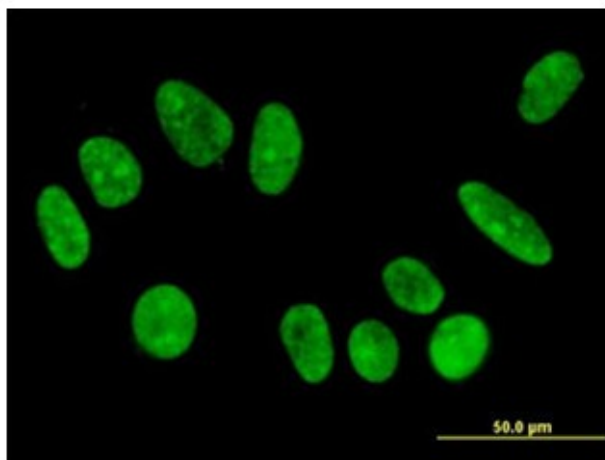
Druggable Genome

**Product images:**

Detection limit for recombinant GST tagged FBXO11 is approximately 0.1 ng/ml as a capture antibody.



Human Skin: Formalin-Fixed, Paraffin-Embedded (FFPE)



Immunofluorescence of monoclonal antibody to FBXO11 on HeLa cell. [antibody concentration 10 ug/ml]