

Product datasheet for **AM31113PU-N**

Junctional Adhesion Molecule 2 (JAM2) (29-299) Mouse Monoclonal Antibody [Clone ID: 1G4]

Product data:

Product Type:	Primary Antibodies
Clone Name:	1G4
Applications:	ELISA, IHC, WB
Recommended Dilution:	ELISA. Immunohistochemistry on Paraffin Sections: 5 µg/ml. Western Blot: 1/500 - 1/1000.
Reactivity:	Human
Host:	Mouse
Isotype:	IgG1
Clonality:	Monoclonal
Immunogen:	JAM2 (AAH17779, 29 a.a. ~ 299 a.a) full length recombinant protein with GST tag
Specificity:	This antibody reacts to JAM2 / JAMB at aa 29-299.
Formulation:	PBS, pH 7.4 State: Purified State: Liquid purified Ig fraction
Concentration:	lot specific
Purification:	Affinity chromatography on Protein A
Conjugation:	Unconjugated
Storage:	Store the antibody undiluted at 2-8°C for one month or (in aliquots) at -20°C for longer. Avoid repeated freezing and thawing.
Stability:	Shelf life: one year from despatch.
Gene Name:	junctional adhesion molecule 2
Database Link:	Entrez Gene 58494 Human P57087



[View online »](#)

Background:

JAM2 belongs to the immunoglobulin superfamily, and the junctional adhesion molecule (JAM) family. The protein encoded by this gene is a type I membrane protein that is localized at the tight junctions of both epithelial and endothelial cells. It acts as an adhesive ligand for interacting with a variety of immune cell types, and may play a role in lymphocyte homing to secondary lymphoid organs. Alternatively spliced transcript variants have been found for this gene.

Synonyms:

JAM-B, C21orf43, VEJAM

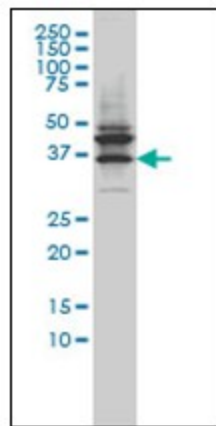
Protein Families:

Druggable Genome, Transmembrane

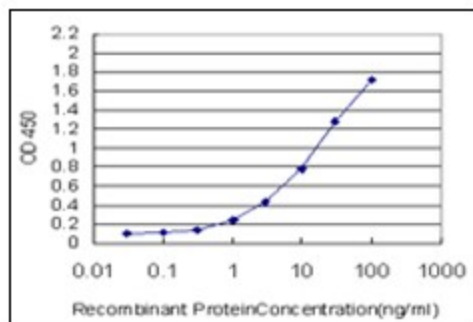
Protein Pathways:

Cell adhesion molecules (CAMs), Epithelial cell signaling in Helicobacter pylori infection, Leukocyte transendothelial migration, Tight junction

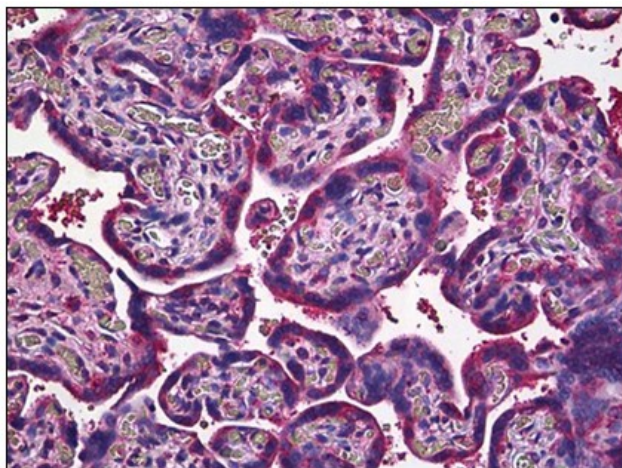
Product images:



Western Blot analysis of JAM2 expression in LNCaP cells with JAM2 monoclonal antibody, clone 1G4.



Detection limit for recombinant GST tagged JAM2 is approximately 0.1 ng/ml as a capture antibody.



Human Placenta: Formalin-Fixed, Paraffin-Embedded (FFPE)