

Product datasheet for **AM31112PU-N**

SMURF1 (165-269) Mouse Monoclonal Antibody [Clone ID: 1D7]

Product data:

Product Type:	Primary Antibodies
Clone Name:	1D7
Applications:	ELISA, IF, IHC, IP, WB
Recommended Dilution:	ELISA. Immunofluorescence: 10 µg/ml. Immunohistochemistry on Paraffin Sections: 5 µg/ml. Immunoprecipitation. Western Blot.
Reactivity:	Human, Mouse
Host:	Mouse
Isotype:	IgG2a
Clonality:	Monoclonal
Immunogen:	SMURF1 (NP_065162, 165 a.a. ~ 269 a.a) partial recombinant protein with GST tag
Specificity:	This antibody reacts to SMURF1 at aa 165-269.
Formulation:	PBS, pH 7.4 State: Purified State: Liquid purified Ig fraction
Concentration:	lot specific
Purification:	Affinity chromatography on Protein A
Conjugation:	Unconjugated
Storage:	Upon receipt, store undiluted (in aliquots) at -20°C. Avoid repeated freezing and thawing.
Stability:	Shelf life: one year from despatch.
Gene Name:	SMAD specific E3 ubiquitin protein ligase 1
Database Link:	Entrez Gene 75788 Mouse Entrez Gene 57154 Human Q9HCE7



[View online »](#)

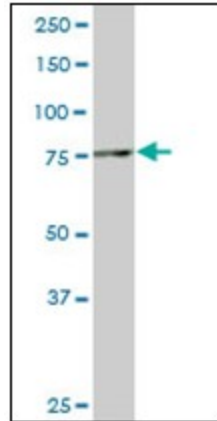
Background: E3 ubiquitin-protein ligase that acts as a negative regulator of BMP signaling pathway. Mediates ubiquitination and degradation of SMAD1 and SMAD5, 2 receptor-regulated SMADs specific for the BMP pathway. Promotes ubiquitination and subsequent proteasomal degradation of TRAF family members and RHOA.

Synonyms: SMURF 1, SMURF-1, KIAA1625

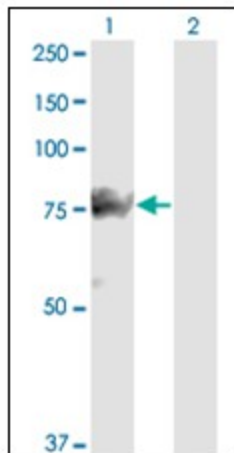
Protein Families: Druggable Genome

Protein Pathways: Endocytosis, TGF-beta signaling pathway, Ubiquitin mediated proteolysis

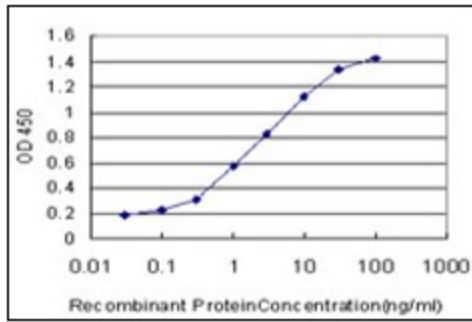
Product images:



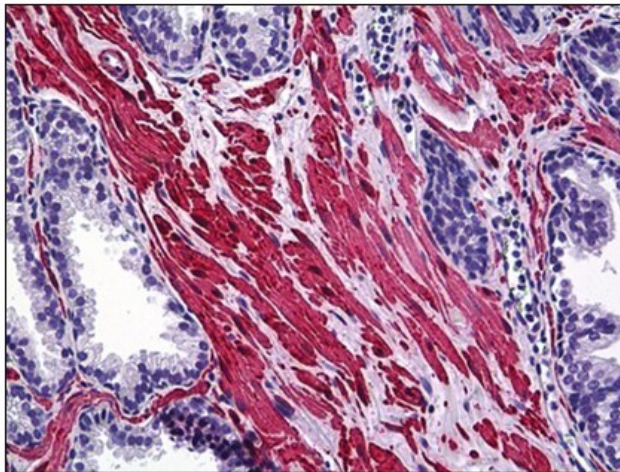
Western Blot analysis of SMURF1 expression in Raw 264.7 cells with SMURF1 monoclonal antibody, clone 1D7.



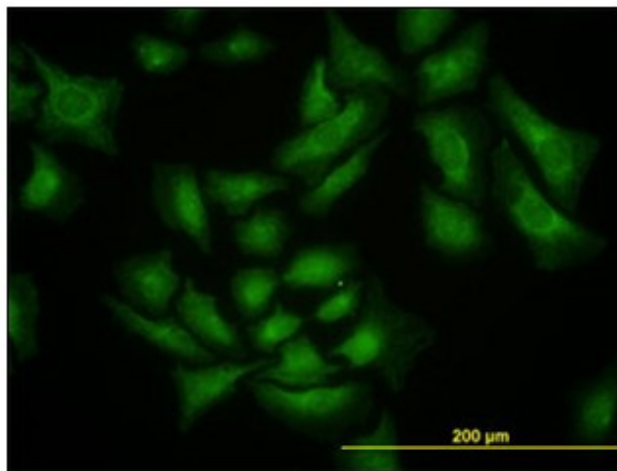
Western Blot analysis of SMURF1 expression in transfected 293T cell line by SMURF1 monoclonal antibody, clone 1D7.



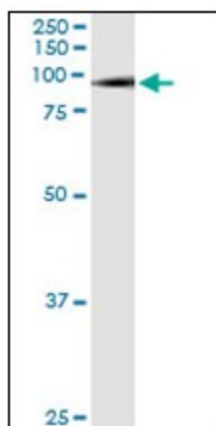
Detection limit for recombinant GST tagged SMURF1 is approximately 0.1ng/ml as a capture antibody.



Human Prostate: Formalin-Fixed, Paraffin-Embedded (FFPE)



Immunofluorescence of monoclonal antibody to SMURF1 on HeLa cell. [antibody concentration 10 ug/ml]



Immunoprecipitation of SMURF1 transfected lysate using anti-SMURF1 monoclonal antibody and Protein A Magnetic Bead.