

## Product datasheet for **AM31110PU-N**

### MTLRP (GHRL) (1-118) Mouse Monoclonal Antibody [Clone ID: 4B8]

#### Product data:

Product Type:	Primary Antibodies
Clone Name:	4B8
Applications:	ELISA, IHC, WB
Recommended Dilution:	<b>ELISA.</b> <b>Immunohistochemistry on Paraffin Sections:</b> 5 µg/ml. <b>Western Blot:</b> 1/500 - 1/1000.
Reactivity:	Human
Host:	Mouse
Isotype:	IgG2a
Clonality:	Monoclonal
Immunogen:	GHRL / Ghrelin antibody was raised against gHRL (AAH25791, 1 a.a. ~ 118 a.a) full length recombinant protein with GST tag. MW of the GST tag alone is 26 KDa.
Specificity:	This antibody recognizes Human GHRL / Ghrelin at aa 1-118.
Formulation:	PBS, pH 7.4 State: Purified State: Liquid purified Ig fraction
Concentration:	lot specific
Purification:	Protein A Chromatography
Conjugation:	Unconjugated
Storage:	Store undiluted at 2-8°C for one month or (in aliquots) at -20°C for longer. Avoid repeated freezing and thawing.
Stability:	Shelf life: one year from despatch.
Gene Name:	ghrelin/obestatin prepropeptide
Database Link:	<a href="#">Entrez Gene 51738 Human</a> <a href="#">Q9UBU3</a>
Background:	Ghrelin is a hormone produced in the stomach before meals that causes hunger pangs.

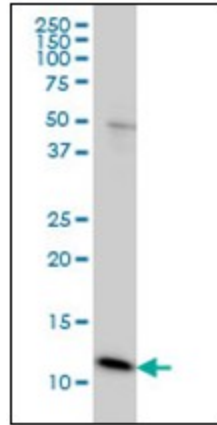


[View online »](#)

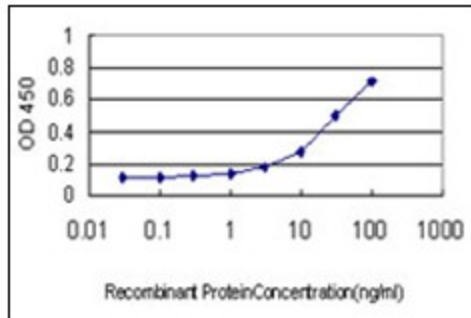
**Synonyms:** Appetite-regulating hormone, Growth hormone-releasing peptide, Ghrelin-27, Ghrelin-28, Obestatin, Motilin-related peptide, MTLRP

**Protein Families:** Druggable Genome, Secreted Protein, Transmembrane

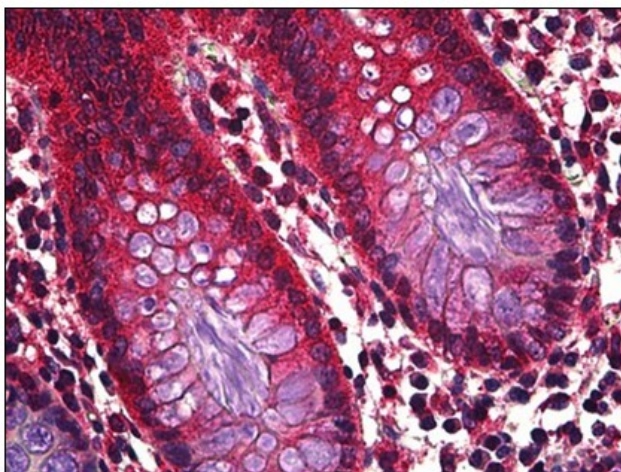
**Product images:**



Western Blot analysis of GHRL expression in HeLa cells with GHRL monoclonal antibody, clone 4B8.



Detection limit for recombinant GST tagged GHRL is approximately 1 ng/ml as a capture antibody.



Human Colon, Epithelium: Formalin-Fixed, Paraffin-Embedded (FFPE)