

Product datasheet for **AM31109PU-N**

MTLRP (GHRL) (1-118) Mouse Monoclonal Antibody [Clone ID: 2F4]

Product data:

Product Type:	Primary Antibodies
Clone Name:	2F4
Applications:	ELISA, IHC, WB
Recommended Dilution:	ELISA. Immunohistochemistry on Paraffin Sections: 5 µg/ml. Western Blot: 1/500 - 1/1000.
Reactivity:	Human
Host:	Mouse
Isotype:	IgG2a
Clonality:	Monoclonal
Immunogen:	GHRL / Ghrelin antibody was raised against ghRL (AAH25791, 1 a.a. ~ 118 a.a) full length recombinant protein with GST tag. MW of the GST tag alone is 26 KDa.
Specificity:	This antibody reacts to Human GHRL / Ghrelin.
Formulation:	PBS, pH 7.4 State: Purified State: Liquid purified Ig fraction
Concentration:	lot specific
Purification:	Protein A Chromatography
Conjugation:	Unconjugated
Storage:	Store the antibody undiluted at 2-8°C for one month or (in aliquots) at -20°C for longer. Avoid repeated freezing and thawing.
Stability:	Shelf life: one year from despatch.
Gene Name:	ghrelin/obestatin prepropeptide
Database Link:	Entrez Gene 51738 Human Q9UBU3
Background:	Ghrelin is a hormone produced in the stomach before meals that causes hunger pangs.

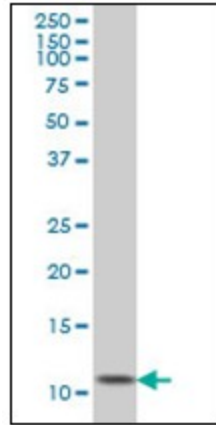


[View online »](#)

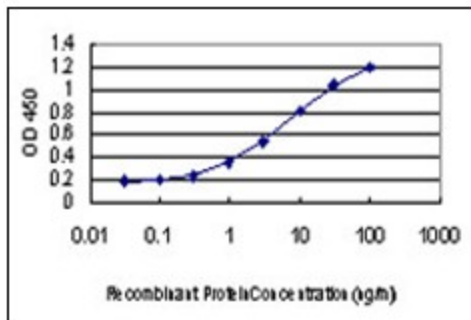
Synonyms: Appetite-regulating hormone, Growth hormone-releasing peptide, Ghrelin-27, Ghrelin-28, Obestatin, Motilin-related peptide, MTLRP

Protein Families: Druggable Genome, Secreted Protein, Transmembrane

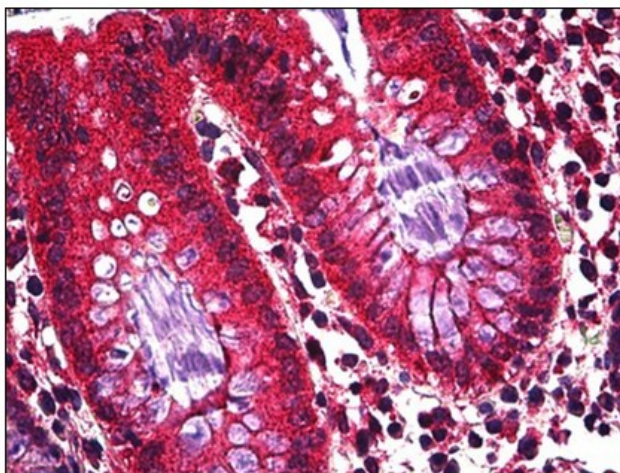
Product images:



GHRL monoclonal antibody (M01), clone 2F4. Western Blot analysis of GHRL expression in HeLa.



Detection limit for recombinant GST tagged GHRL is approximately 0.1ng/ml as a capture antibody.



Human Colon, Epithelium: Formalin-Fixed, Paraffin-Embedded (FFPE)