

Product datasheet for **AM31107PU-N**

MECP2 (81-170) Mouse Monoclonal Antibody [Clone ID: 4B6]

Product data:

Product Type:	Primary Antibodies
Clone Name:	4B6
Applications:	ELISA, IHC, WB
Recommended Dilution:	ELISA. Immunohistochemistry on Paraffin Sections: 5 µg/ml. Western Blot: 1/500 - 1/1000.
Reactivity:	Human, Mouse, Rat
Host:	Mouse
Isotype:	IgG2a
Clonality:	Monoclonal
Immunogen:	MECP2 antibody was raised against MECP2 (81 a.a. ~ 170 a.a) partial recombinant protein with GST tag.
Specificity:	This antibody reacts to MECP2 at aa 81-170.
Formulation:	PBS, pH 7.4 State: Purified State: Liquid purified Ig fraction
Concentration:	lot specific
Purification:	Affinity chromatography on Protein A
Conjugation:	Unconjugated
Storage:	Store the antibody undiluted at 2-8°C for one month or (in aliquots) at -20°C for longer. Avoid repeated freezing and thawing.
Stability:	Shelf life: one year from despatch.
Gene Name:	methyl-CpG binding protein 2
Database Link:	<u>Entrez Gene 17257 Mouse</u> <u>Entrez Gene 29386 Rat</u> <u>Entrez Gene 4204 Human P51608</u>



[View online »](#)

Background:

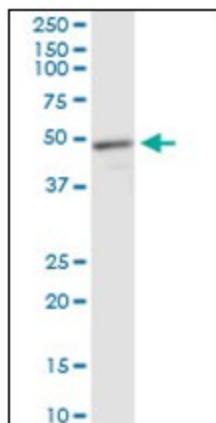
DNA methylation is the major modification of eukaryotic genomes and plays an essential role in mammalian development. Human proteins MECP2, MBD1, MBD2, MBD3, and MBD4 comprise a family of nuclear proteins related by the presence in each of a methyl-CpG binding domain (MBD). Each of these proteins, with the exception of MBD3, is capable of binding specifically to methylated DNA. MECP2, MBD1 and MBD2 can also repress transcription from methylated gene promoters.

Synonyms:

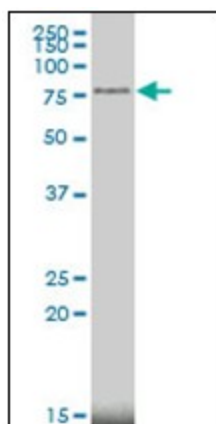
MeCP-2 protein

Protein Families:

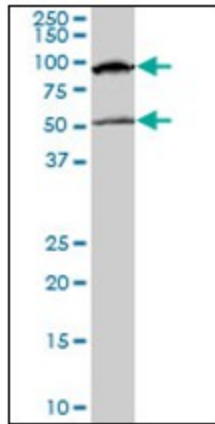
Druggable Genome

Product images:

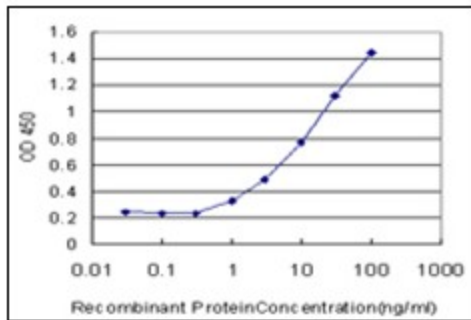
MECP2 monoclonal antibody clone 4B6. Western Blot analysis of MECP2 expression in rat muscle.



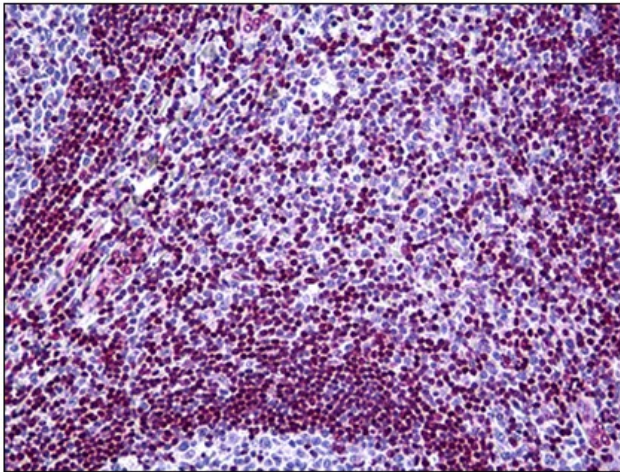
MECP2 monoclonal antibody clone 4B6 Western Blot analysis of MECP2 expression in MCF-7.



MECP2 monoclonal antibody clone 4B6. Western Blot analysis of MECP2 expression in NIH/3T3.



Detection limit for recombinant GST tagged MECP2 is approximately 1ng/ml as a capture antibody.



Human Tonsil: Formalin-Fixed, Paraffin-Embedded (FFPE)